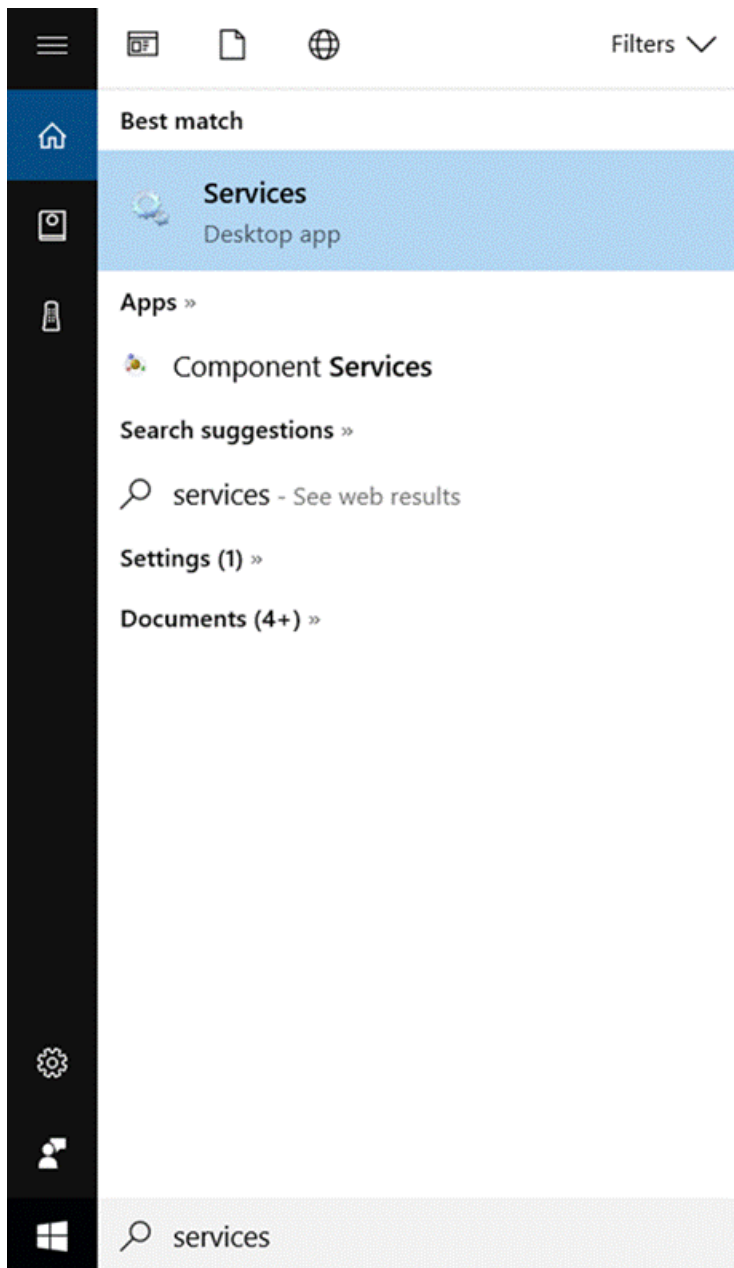


1. Click down on the search bar at the bottom left of the screen and type in "Services". Select the **Services** application that pops up.



2. Scroll down the list and find *Wired AutoConfig*. Double click *Wired AutoConfig*.



Services (Local)

Services (Local)

Wired AutoConfig

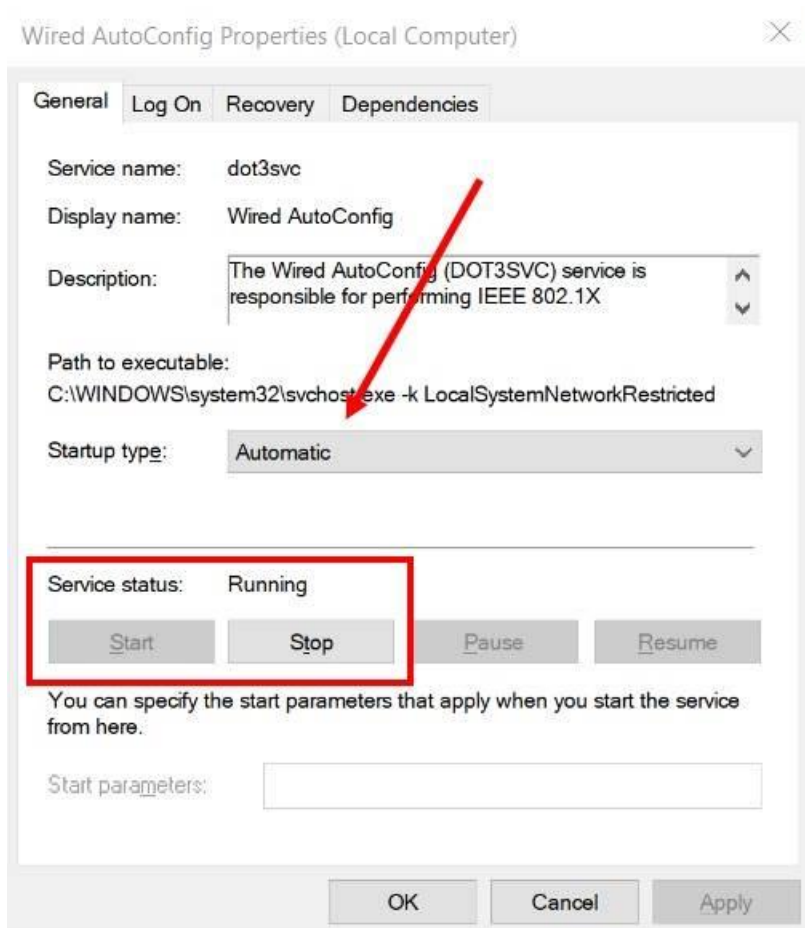
[Stop](#) the service
[Restart](#) the service

Description:
The Wired AutoConfig (DOT3SVC) service is responsible for performing IEEE 802.1X authentication on Ethernet interfaces. If your current wired network deployment enforces 802.1X authentication, the DOT3SVC service should be configured to run for establishing Layer 2 connectivity and/or providing access to network resources. Wired networks that do not enforce 802.1X authentication are unaffected by the DOT3SVC service.

Name	Description	Status	Startup Type	Log On As
Windows Installer	Adds, modifi...		Manual	Local System
Windows License Manager S...	Provides infr...	Running	Manual (Trigg...	Local Service
Windows Management Instr...	Provides a c...	Running	Automatic	Local System
Windows Media Player Netw...	Shares Wind...		Manual	Network Se...
Windows Mobile Hotspot Se...	Provides the...		Manual (Trigg...	Local Service
Windows Modules Installer	Enables inst...		Manual	Local System
Windows Perception Service	Enables spat...		Manual (Trigg...	Local Service
Windows Presentation Foun...	Optimizes p...	Running	Manual	Local Service
Windows Push Notifications...	This service r...	Running	Automatic	Local System
Windows Push Notifications...	This service ...	Running	Automatic	Local System
Windows Remote Managem...	Windows Re...	Running	Automatic	Network Se...
Windows Search	Provides con...	Running	Automatic (De...	Local System
Windows Time	Maintains d...	Running	Manual (Trigg...	Local Service
Windows Update	Enables the ...		Automatic (Tri...	Local System
WinHTTP Web Proxy Auto-D...	WinHTTP im...	Running	Manual	Local Service
Wired AutoConfig	The Wired A...	Running	Automatic	Local System
WLAN AutoConfig	The WLANS...	Running	Automatic	Local System
WMI Performance Adapter	Provides per...		Manual	Local System
Work Folders	This service ...		Manual	Local Service
Workstation	Creates and ...	Running	Automatic	Network Se...
WWAN AutoConfig	This service ...		Manual	Local Service
Xbox Accessory Managemen...	This service ...		Manual	Local System
Xbox Game Monitoring	This service ...		Manual (Trigg...	Local System
Xbox Live Auth Manager	Provides aut...		Manual	Local System
Xbox Live Game Save	This service ...		Manual (Trigg...	Local System
Xbox Live Networking Service	This service ...		Manual	Local System

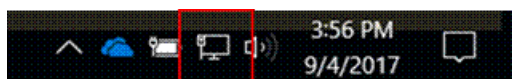
Extended Standard

3. Make sure, in the box that pops up, that Startup Type is set to *Automatic*. If service status is not *Running* push Start option. Click *Apply* if you made any changes and then click OK.

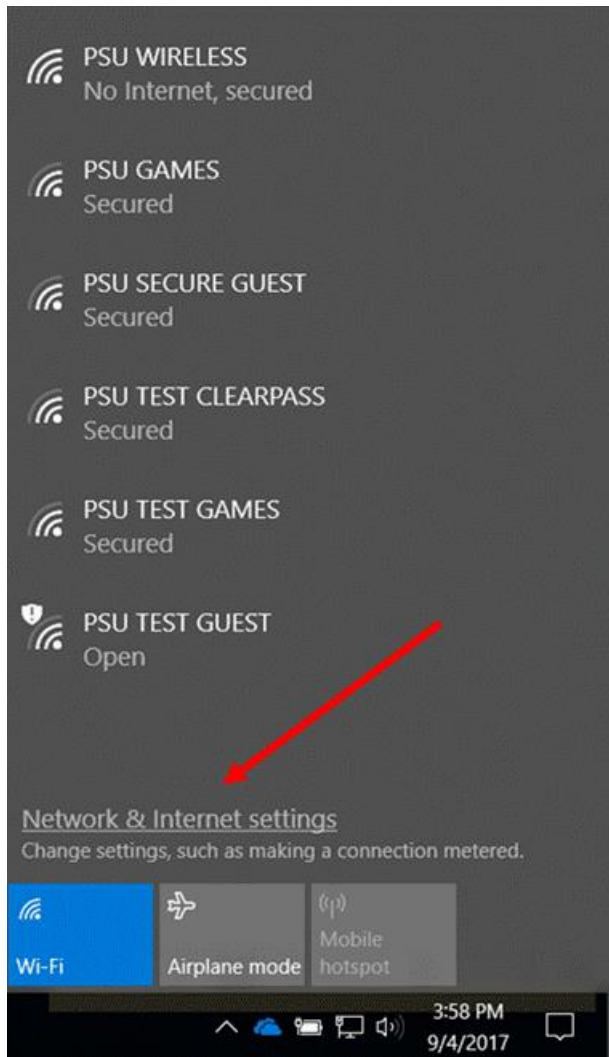


4. Close out of Services application.

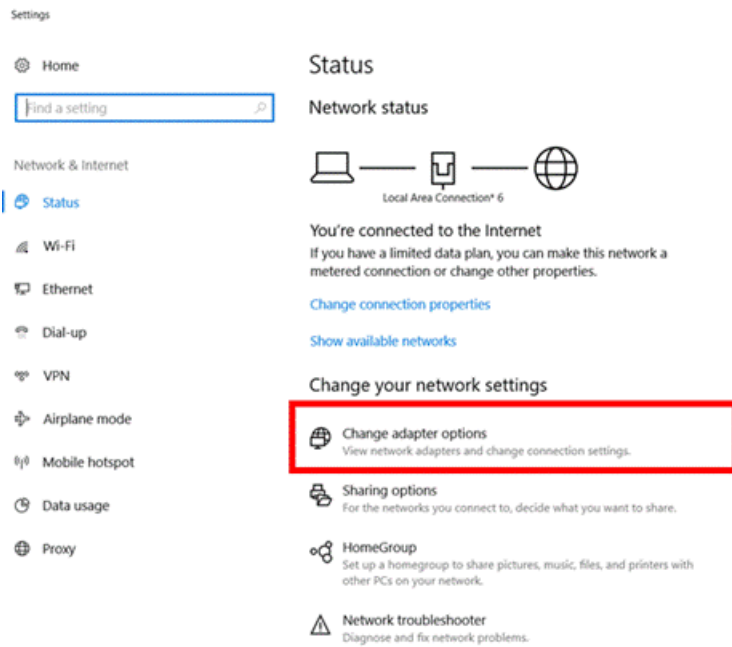
5. At the bottom right corner of the screen click the Internet connection icon.



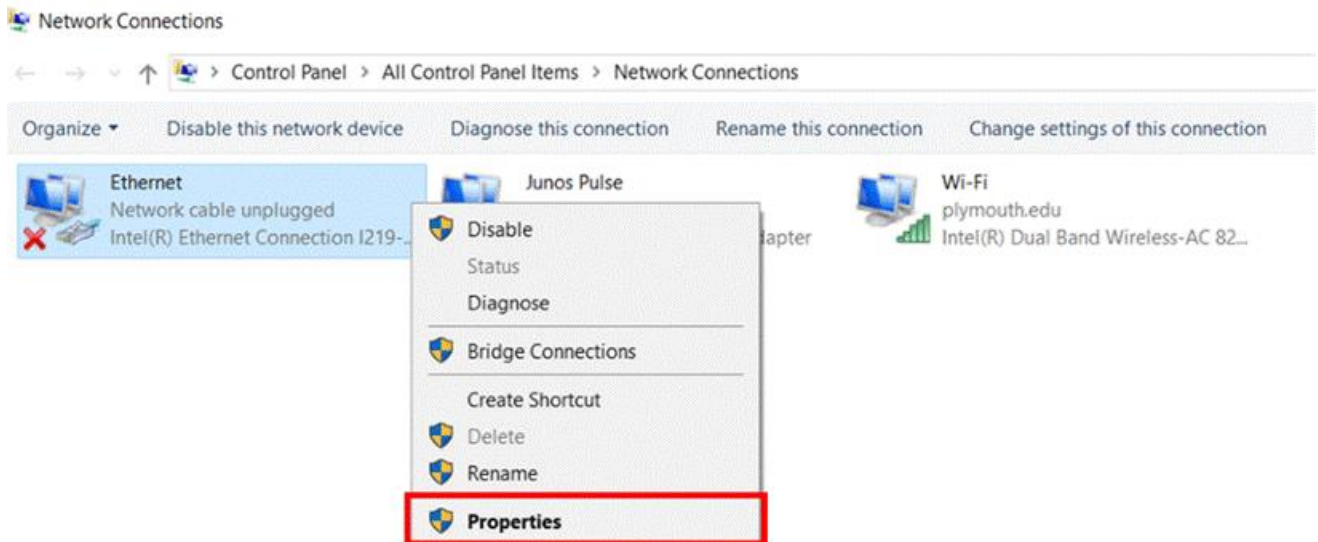
6. In the box that pops up on the right, click **Network & Internet Settings**.



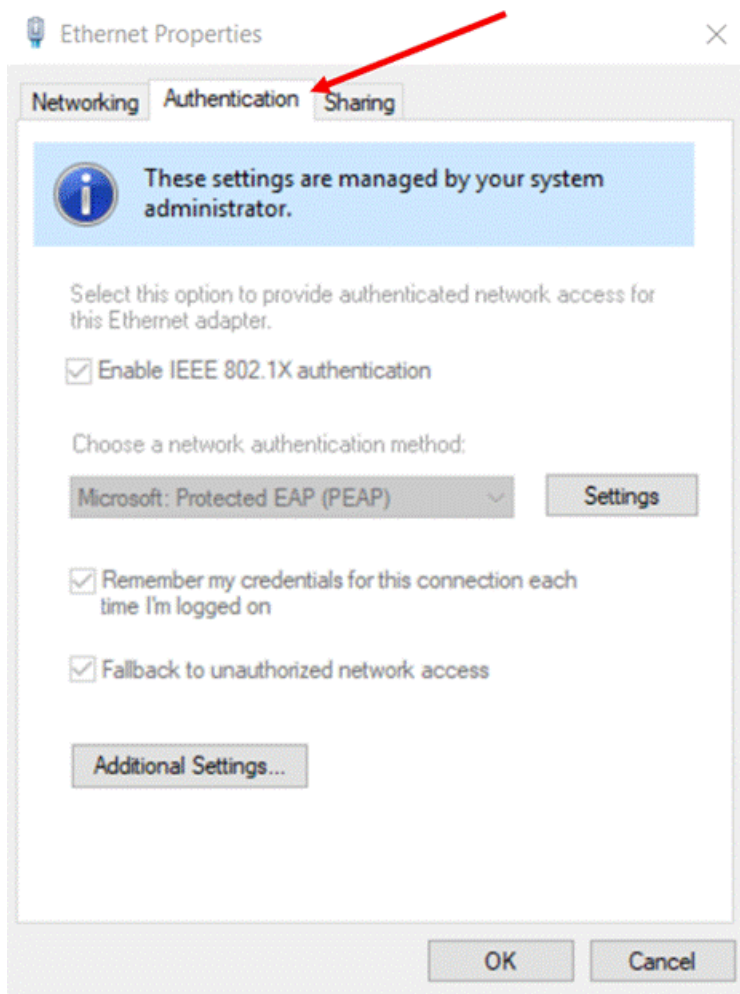
7. In the Settings screen click on **Change Adapter Options**.



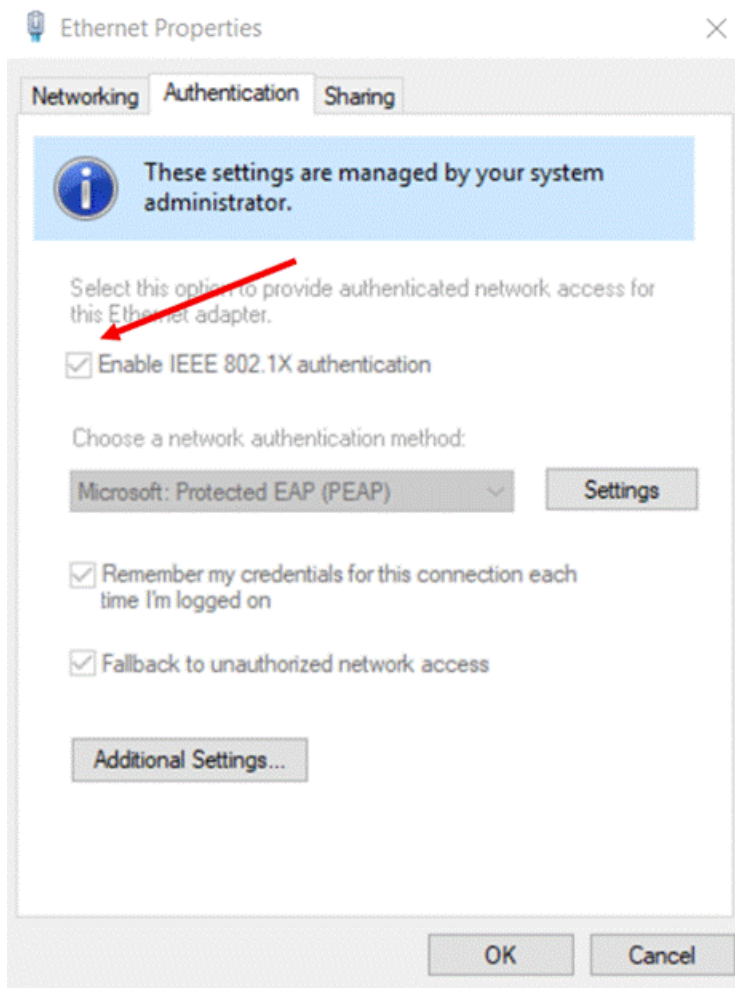
8. In the window that pops up right-click on "Ethernet" or "Local Area Connection" (it may say one or the other) and then click **Properties**.



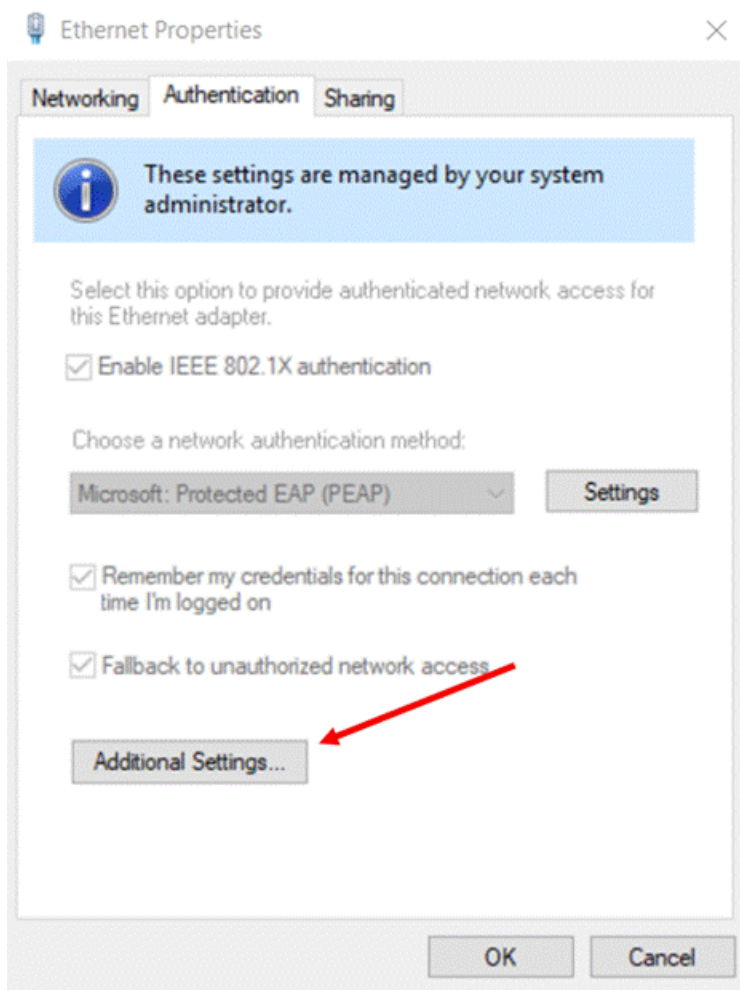
9. At the top of the Ethernet Properties box click on the *Authentication* tab.



10. Make sure that "Enable IEEE 802.1x authentication" has a check mark next to it.



11. Click *Additional Settings*



12. In the Additional Settings screen make sure that "Specify Authentication Mode" is checked. From the drop down right below that select "User or computer authentication". Then click *Save credentials*. Type in your Carson-Newman username and password and then click save. Click Ok on each of the windows that you opened until they are all closed out.

802.1X settings

Specify authentication mode

User or computer authentication

Delete credentials for all users

Enable single sign on for this network

Perform immediately before user logon

Perform immediately after user logon

Maximum delay (seconds):

Allow additional dialogs to be displayed during single sign on

This network uses separate virtual LANs for machine and user authentication

13. You may need to unplug your ethernet cable and plug it back in. If that doesn't work try to restart your computer in order for the network to connect.