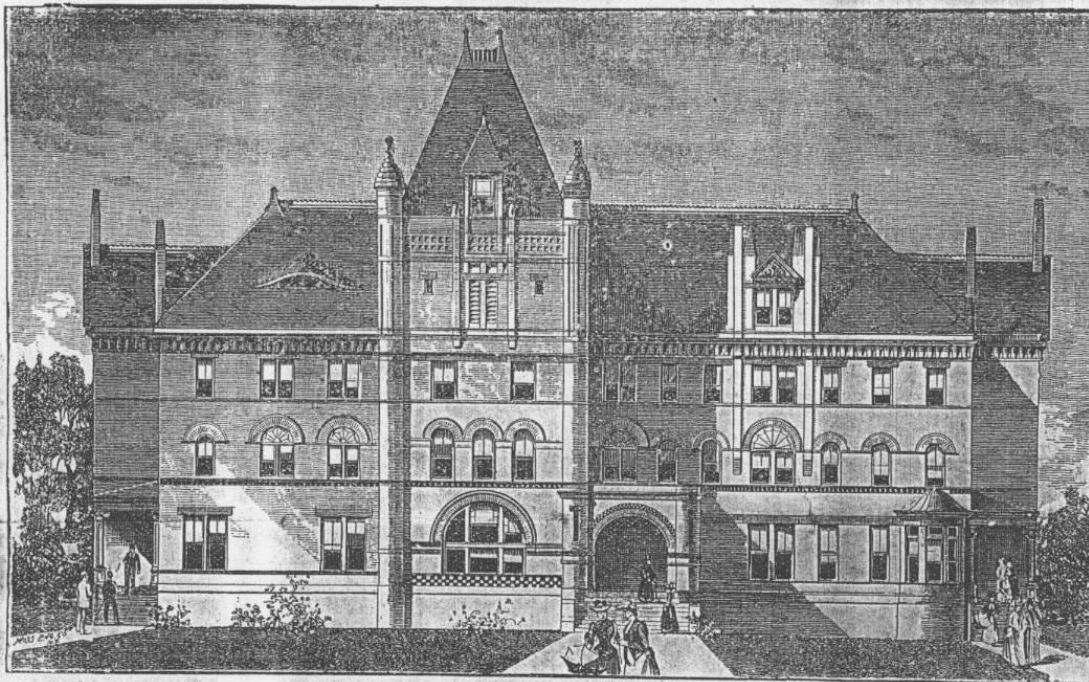


CARSON AND NEWMAN COLLEGE.

(Co-Educational.)

MOSSY CREEK, TENNESSEE.



Next Term Opens August 29, 1896.

The past year has been the most prosperous in the history of the institution, the attendance having been an increase of 25 per cent over that of the preceding year. The magnificent new building has proved to be a great success and affords accommodations for five hundred students. The College is located on the main line of the East Tennessee, Virginia & Georgia Railroad, twenty-nine miles east of Knoxville, in the town of Mossy Creek.

Instruction is given in penmanship, book-keeping, short-hand, and type-writing. Our principal of music, Prof. J. I. Simpson, is a teacher of exceptional skill and ability. Miss Fuqua, our newly elected teacher of art, comes to us highly endorsed and we hope to see this department prosperous. Physical drill is required one half hour each day. The Bible is studied systematically by the entire school. Social culture is made a special feature. Excellent facilities are provided for the boarding of young ladies. The cost of board and lodging is from \$8.00 to \$10.00 per month. Students can rent rooms and board at a much lower rate. Tuition is from \$2.00 to \$4.00 per month. Children of ministers actively engaged as pastors or evangelists, or of deceased ministers, are charged only half rates. A high grade of discipline is maintained. Standard of promotion is high. Those desiring to fit themselves for teaching will be given instruction in methods of teaching and school management. For further information, address,

J. T. HENDERSON, Ch'm'n Fac.

R. A. HENDERSON, Sec'y.