

# Enrollment, Retention, and Graduation



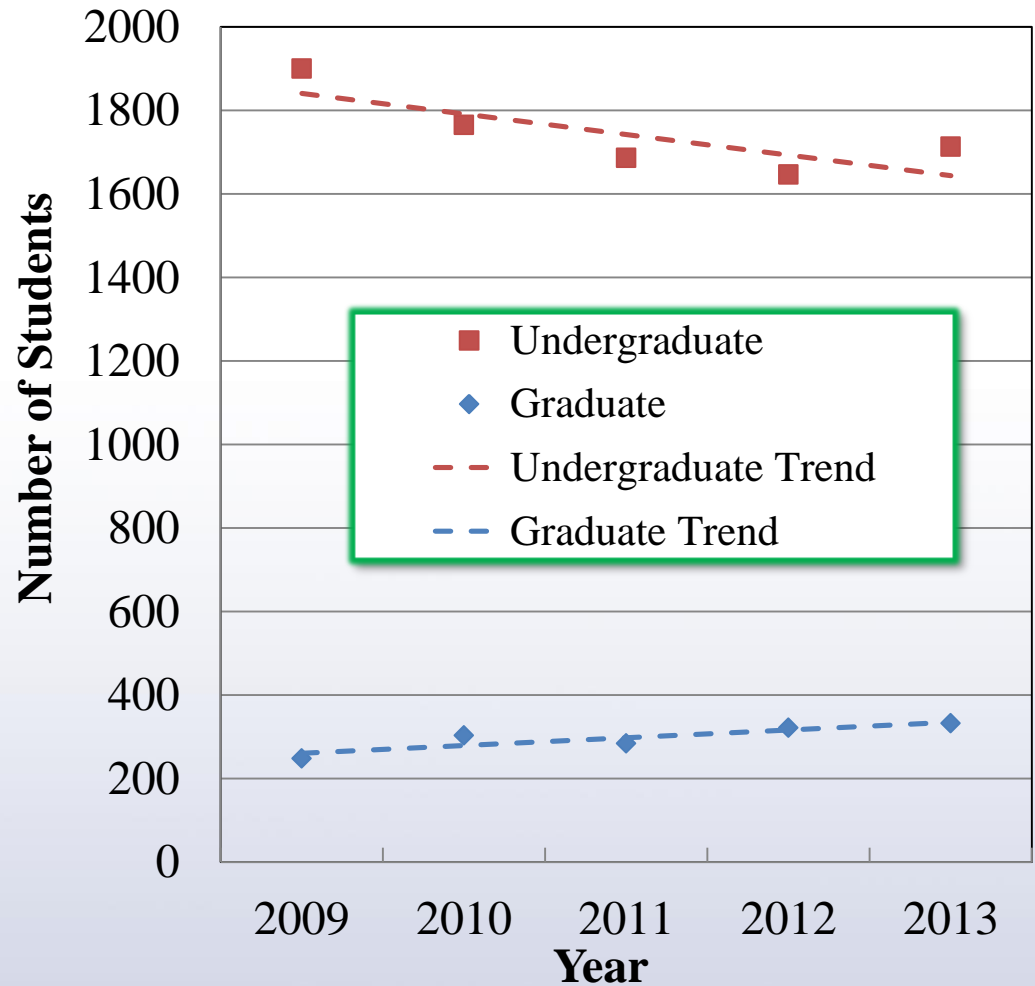
CARSON-NEWMAN

*A Christian University*

*Higher Education  
for a Higher Purpose*

# Enrollment

- Undergraduate numbers declining
- Graduate numbers increasing
- Total enrollment steady at around 2,000 students

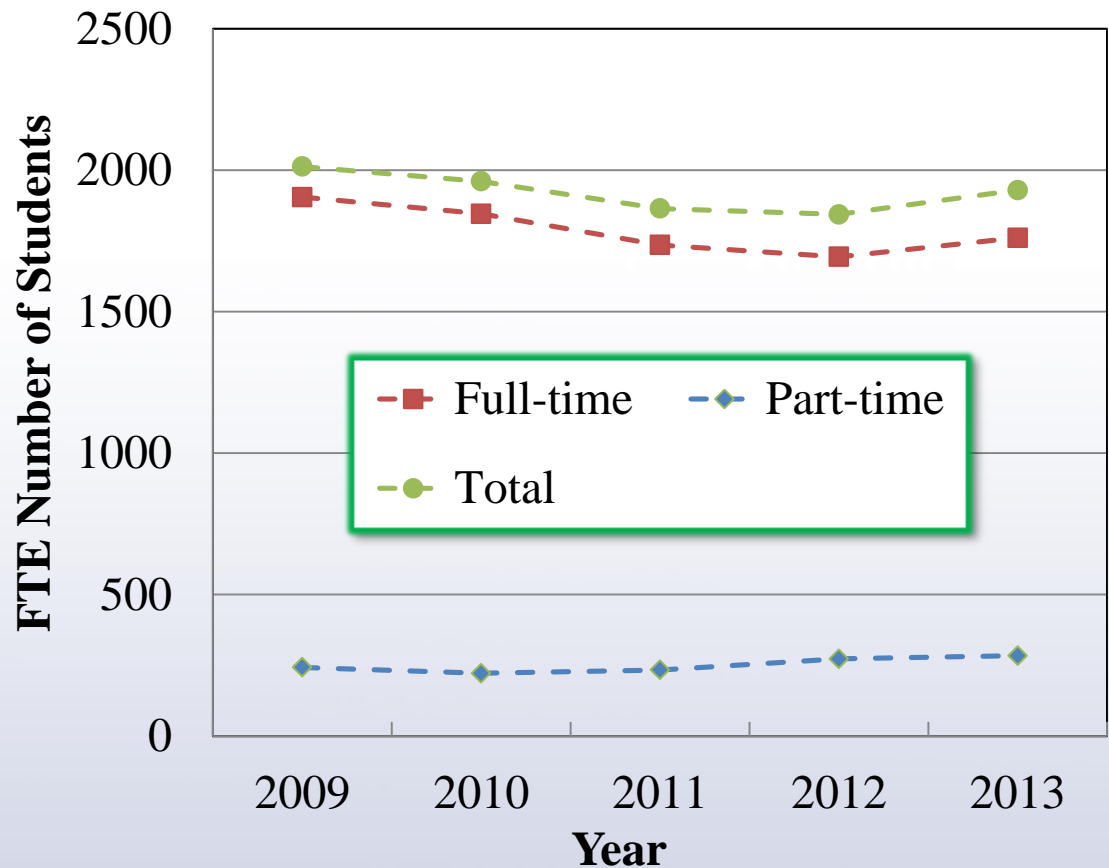


CARSON-NEWMAN

*A Christian University*

*Higher Education  
for a Higher Purpose*

# Full-Time-Equivalent Student Population

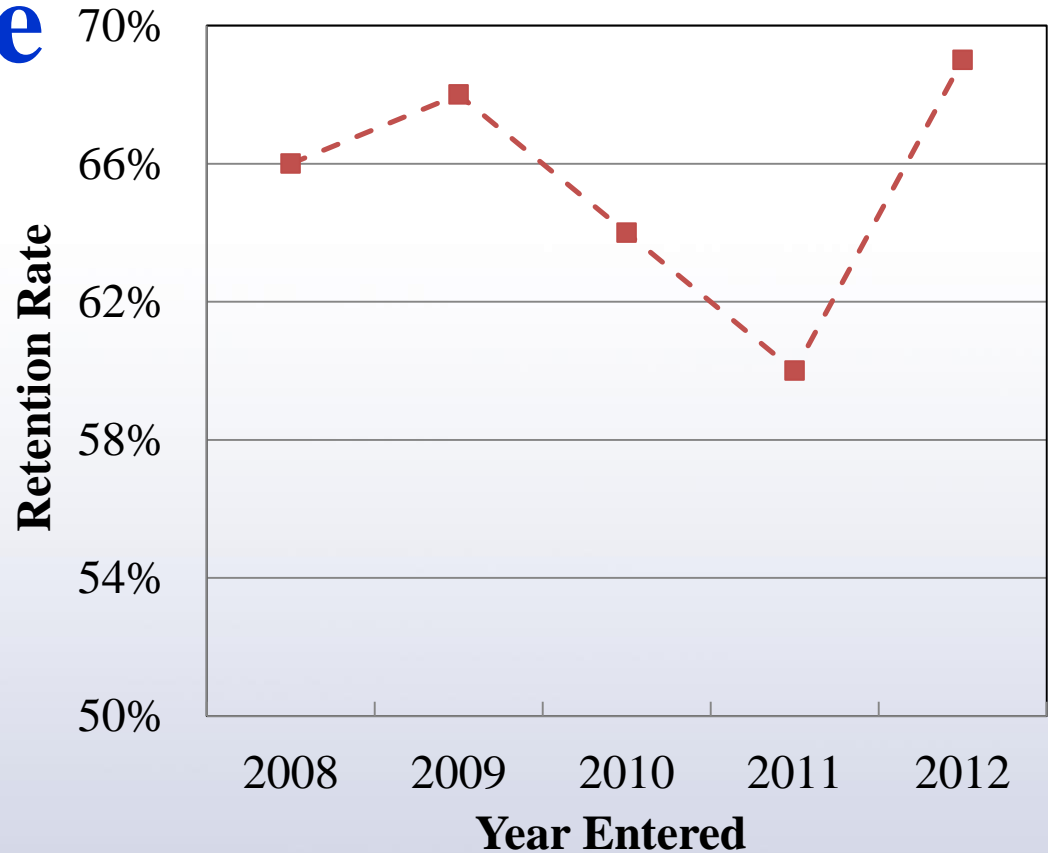


CARSON-NEWMAN

*A Christian University*

*Higher Education  
for a Higher Purpose*

# Freshmen-to-Sophomore Retention Rate



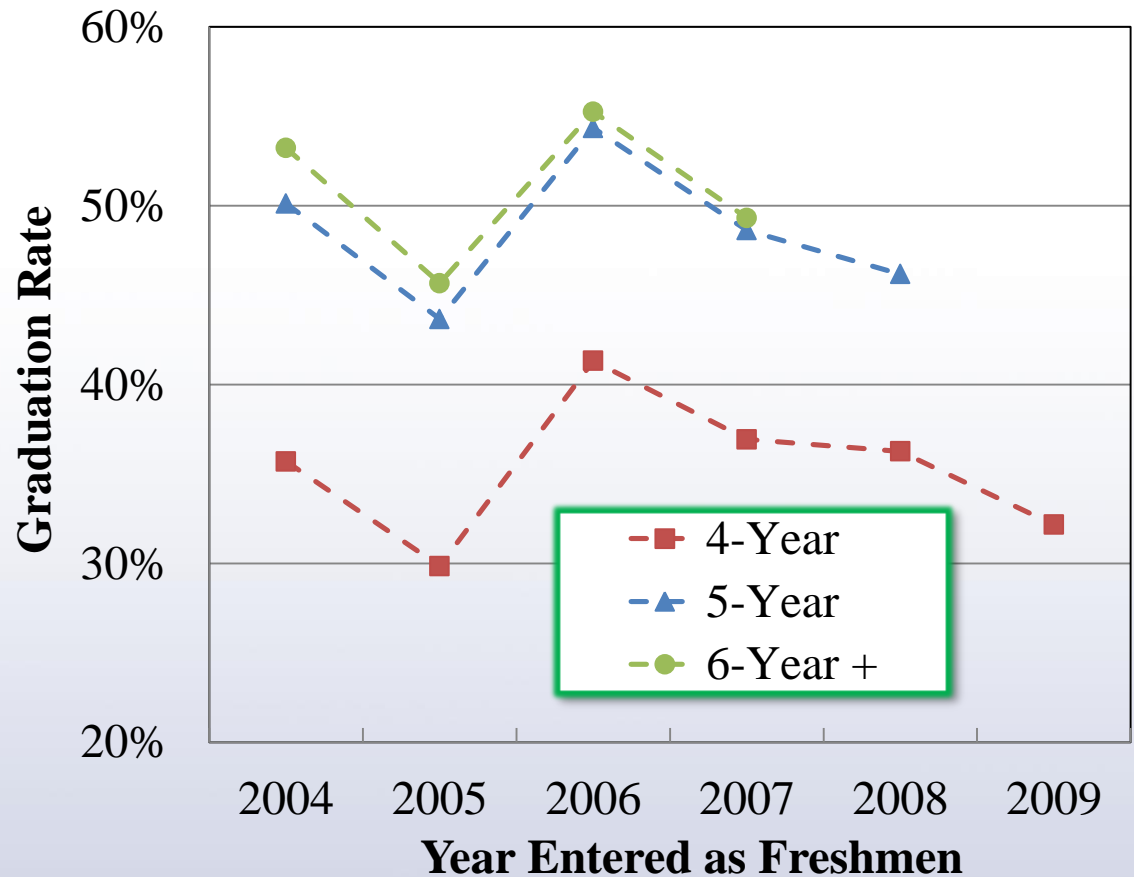
CARSON-NEWMAN

*A Christian University*

*Higher Education  
for a Higher Purpose*



# Graduation Rates

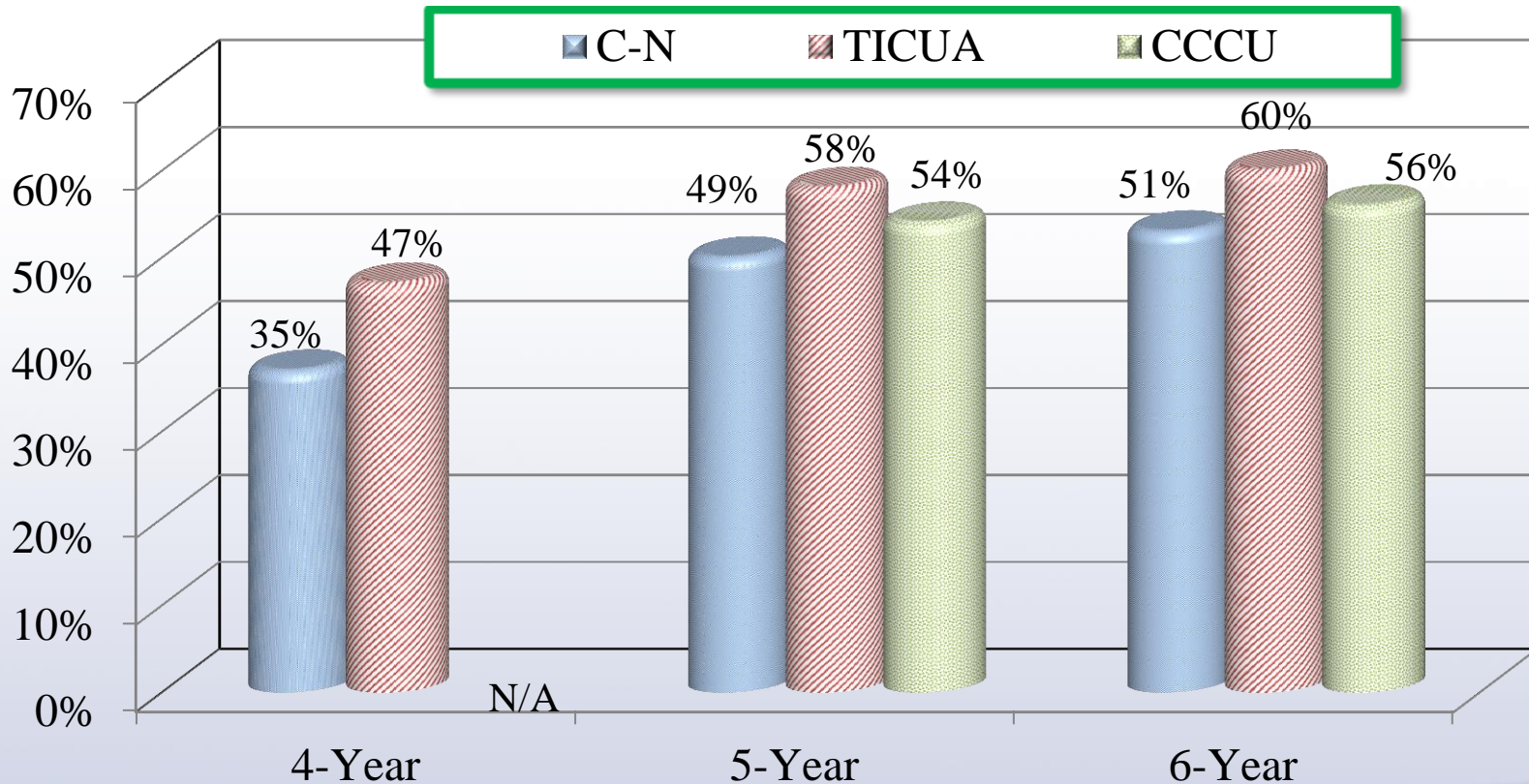


CARSON-NEWMAN

*A Christian University*

*Higher Education  
for a Higher Purpose*

# C-N Graduation Rates Compared to CCCU & TICUA Schools



CARSON-NEWMAN

*A Christian University*

*Higher Education  
for a Higher Purpose*