



**SCHOOL OF FAMILY
AND CONSUMER
SCIENCES**

**CARSON-NEWMAN
COLLEGE**

STUDENT HANDBOOK

Fall 2009

Contents

I. Philosophical Base	4
Professional Websites	5
Milestones of Family and Consumer Sciences at Carson-Newman	5
School of Family and Consumer Sciences	7
Mission Statement	7
Vision Statement	7
Department of Family and Consumer Sciences Goals and Objectives 2005-2010	7
II. Composition of the Department	9
Organizational Chart	10
III. Curriculum	11
Majors Offered By the Department of Family and Consumer Sciences	12
Child and Family Studies with emphasis in Early Childhood Education.	12
Consumer Services with emphases in Interior Design and Retail.	12
Family and Consumer Sciences Education	13
Foods, Nutrition, and Dietetics.	13
Curricular Check sheets and Flowcharts	13
Core Courses	14
FCS Core Classes Listing	14
Consumer Services Core Classes Listing	15
Practical Learning Opportunities	15
Internships	15
Internship Site Selection/Student Responsibilities	16
Student Intern Responsibilities	16
Cooperating Employer Responsibilities	17

Site Supervisor Responsibilities	17
Faculty Coordinator Responsibilities	18
Student Teaching	19
Courses Requiring Application	19
IV. Professional Development of Students	20
Student Organizations	21
<u>Carson-Newman Association of Family and Consumer Sciences (C-NAFCS)</u>	21
<u>Kappa Beta Xi</u>	21
<u>Carson-Newman Student Dietetics Association (C-NSDA)</u>	21
<u>Carson-Newman Interior Design Association (CNIDA)</u>	22
<u>CN-Association for the Education for Young Children (CNAEYC)</u>	22
Credentialing Opportunities	23
<u>Certified Family and Consumer Scientist (CFCS)</u>	23
<u>Carson-Newman Interior Design Association (CNIDA)</u>	23
<u>CN-Association for the Education for Young Children (CNAEYC)</u>	23
V. Departmental Student Awards and Scholarships	24
Awards	25
Award Descriptions	25
Scholarships	27
Scholarship Descriptions	28
Professional Organization Scholarships	32
Appendix A: Checksheet & Flow Charts for all Majors in School of FCS	36
Child & Family Studies	37
Child & Family Studies: Early Childhood Education (PreK-3) Emphasis	40
Consumer Services Major	41

Consumer Services with an Emphasis in Interior Design	43
Consumer Services: Retailing Emphasis	44
Family and Consumer Sciences Education Major	46
Food, Nutrition & Dietetics	48
Appendix B: Reservation Forms for RTL 242, FN 310, and CS 432	49
RTL 242 Textiles and Clothing Construction	50
FN 310 Principles of Food Preparation, Management, and Service	51
CS 432: Cooperative Management	52

Part I: Philosophical Base

Welcome to the School of Family and Consumer Sciences! The FCS Student Handbook is intended to introduce family and consumer sciences majors to the academic, professional and scholarship program of the Department of Family and Consumer Sciences. In addition to becoming acquainted with this handbook, also carefully study the [Eagle Student Handbook](#) for student related procedures and policies. The current [Carson-Newman College Undergraduate Catalog](#) is a great source for information concerning academic regulations and major requirements. The FCS faculty welcomes suggestions for additional information or procedures that would provide students a clearer understanding of departmental functions, policies and procedures.

Professional Websites

The following websites provide information on the history of the profession, current research, and opportunities for professional development and involvement.

[American Association of Family and Consumer Sciences](#)

[American Dietetic Association](#)

[Kappa Omicron Nu](#)

[National Association for the Education of Young Children](#)

[National Council on Family Relations](#)

Milestones of Family and Consumer Sciences at Carson-Newman

1906	School of Domestic Science founded at C-N – the <i>first</i> private college in the S.E.US to offer home economics as a regular course of study – (basement of Sarah Swann Dorm)
1909	American Home Economics Association (AHEA) founded
1912-1916	Home Economics moved to the Administration Building
1916	Fire caused Home Economics to be moved to a cottage on the present Butler Dorm site
1916	Home Economics moved to the former Henderson Hall
1921	Home Economics became a major, meeting B.S. degree requirements
1925-1931	C-N’s first “practice house” procured
1949	Recommendation made to Board of Trustees for construction of a Cafeteria/Home Economics Student Center
1952	Baker Building completed
1952	College purchased residence at corner of North College and Russell Streets for a home management house

- 1967 The old home management house razed (the current site of a parking lot across from Fite Administration Building)
- 1968 Kappa Omicron Phi Chapter chartered at C-N
- 1972 Home Economics at C-N approved by the TN Board of Education for Vocational Home Economics
- 1979 Dietetics program approved by the American Dietetic Association (ADA)
- 1980 New majors added to catalog: dietetics, merchandising, interior design, child & family studies
- 1981 Department of Home Economics Advisory Board founded
- 1982 Department celebrated 75 years
- 1985 Department of Home Economics accredited by the American Home Economics Association to 1995
- 1989 FCS Advisory Board led Duncan Hall Renovation/Showcasing
- 1990 Dietetics program granted ADA approval to 2000
- 1990 Faculty/Advisory Board presented Duncan Renovation project at AHEA Annual Meeting in San Antonio
- 1991 Early Childhood Education emphasis granted accreditation/approval
- 1992 Child Development Lab initially accredited by NAEYC to 1995
- 1994 In April, Carson-Newman College changed the name Home Economics to Family and Consumer Sciences (FCS)
- 1995 In June, AHEA changed name to the American Association of Family and Consumer Sciences (AAFCS)
- 1995 Department of FCS re-accredited by AAFCS to 2005
- 1995 Child Development Lab re-accredited by NAEYC to 1998
- 1996 CN-FCS and Knoxville Chapter IDS co-sponsored *IDS on Stage* to benefit Duncan Hall endowment
- 1996 FCS Advisory Board sponsored *Now Is The Time* Family Conference at Pigeon Forge
- 1997 Faculty/Provost presented accreditation experience at AAFCS Annual Meeting in Nashville
- 1998 Beta Xi Chapter of Kappa Omicron Nu, won 14th consecutive first place National Chapter Excellence Award
- 1998 Child Development Lab re-accredited by NAEYC to 2001
- 1998 Board of Trustees approved \$2.3 m Baker renovation fund raising campaign
- 1998 FCS Advisory Board sponsored “Baker Bash” following homecoming game
- 1999 FCS Advisory Board sponsored “Baker Blast” following homecoming game
- 2001 Beta Xi Chapter of Kappa Omicron Nu won one of three National Chapter Excellence Awards
- 2001 Child Development Lab re-accredited by NAEYC to 2004
- 2002 Child Development Lab awarded Three Star Rating by TN Department of Human Services
- 2003 Beta Xi Chapter of Kappa Omicron Nu again won one of three National Chapter Excellence Awards
- 2004 Child Development Lab re-accredited by NAEYC to 2007
- 2005 B/S/H Home Appliances committed to equipping the new food science laboratory with Thermador/Bosch professional appliances
- 2005 Beta Xi Chapter of Kappa Omicron Nu again won one of three National Chapter Excellence Awards
- 2005 New computer laboratory with computer assisted design software made possible by a gift from advisory board member

- 2006 Ground breaking held for Blye-Poteat Hall and the Child Development Lab, new homes for Family and Consumer Sciences (January 20, 2006)
- 2006 Joint accreditation site visits from the Council for Accreditation of AAFCS and the Commission on Accreditation for Dietetics Education (CADE) of ADA (reaffirmations to 2015 and 2016, respectively)
- 2006 Dedicated outdoor room and renovated rear foyer at Duncan Hall, gifts of two advisory board members
- 2006 Department celebrated 100 years with gala banquet (October 6, 2006)
- 2007 FCS new facilities Ribbon Cutting (May 3, 2007)
- 2007 FCS new facilities Dedication (October 12, 2007)
- 2008 Duncan Hall became *non-residential* cooperative management laboratory and received \$15,000 Jaunita Fazola Grant for making the facility a regional model of re-adaptive sustainable housing
- 2009 All full-time FCS faculty to participate in centennial annual meeting of AAFCS in Knoxville, TN

Updated February 6, 2009

School of Family and Consumer Sciences

Since 1906 the mission of the School has evolved to reflect societal and philosophical changes in the mission of the profession. Today Family and Consumer Sciences is a field of knowledge and service primarily concerned with empowering individuals, strengthening families, and enabling communities.

Mission Statement

The mission of the School of Family and Consumer Sciences is to prepare professionals with the abilities to empower individuals, strengthen families, and enable communities in a changing and diverse global environment. The unit provides an integrated, generalist undergraduate education in a caring and nurturing Christian liberal arts setting.

Vision Statement

To become a preeminent family and consumer sciences unit in a Christian liberal arts college with a world-wide impact (Strategic Plan III, -revised July 13, 2005).

Department of Family and Consumer Sciences Goals and Objectives 2005-2010

The following four broad goals are the basis for both long-and short-range planning and priority setting:

Goal I. Prepare graduates with the knowledge and skills to improve professional,

individual, and family lives across the life span in a changing, culturally diverse global environment.

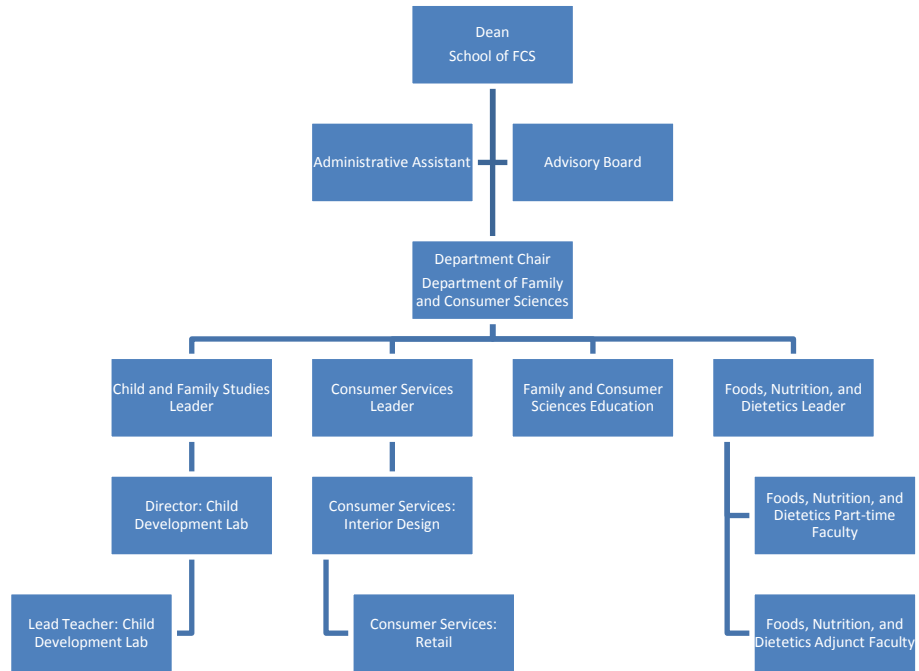
Goal II. Cultivate a highly professional faculty who engage in continuous development, creative efforts, and short-and long-range planning to enhance teaching effectiveness and service to the profession, the institution, and the community.

Goal III. Maintain high quality programs that meet national standards.

Goal IV. Provide updated curricula relevant to scientific, technological, and societal changes.

Part II: Composition of the Department

Carson-Newman College
School of Family and Consumer Sciences
Organizational Chart



Part III: Curriculum

Majors Offered By the Department of Family and Consumer Sciences

Four degree programs are available in the following subject areas: (a) child and family studies (with emphasis in early childhood education); (b) consumer services (with emphases in interior design and retailing); (c) family and consumer sciences education; and (d) foods, nutrition, and dietetics.

Child and Family Studies with emphasis in Early Childhood Education.

This major is designed for students who are interested in studying human growth and development within the context of the family and community. The early childhood education emphasis prepares the student for teacher licensure for pre-kindergarten through grade three. Training is provided for working with children as a teacher or program administrator in early childhood programs, various positions in community agencies, and church-related programs, or as a public school teacher for grades K-3. This major is excellent preparation for graduate study in child development, psychology, sociology, and social work. Other students choose this major as a foundation for seminary studies in family counseling and religious education.

Consumer Services with emphases in Interior Design and Retail.

This major is designed for students who plan to combine family and consumer sciences with related business areas. Within the major, choices are an emphasis in retailing, interior design, or consumer services. The retailing emphasis provides preparation for positions in merchandising, store management, store presentation, consumer services, human resources information systems, promotion, store operations and physical distribution, and entrepreneurship. The interior design emphasis meets the demand for qualified people to design functional, aesthetically pleasing interiors. Students are prepared for a career in interior design, design illustration, or sales. The consumer services emphasis provides preparation for careers using a broad base of family and consumer sciences and business competencies. Career opportunities include housing, government agencies, budgeting and debt management, cooperative extension positions, and financial services.

Family and Consumer Sciences Education

This teacher licensure program prepares one for teaching in family and consumer sciences programs in middle and secondary schools (5th-12th grade), as well as other FCS areas. Courses leading to teaching licensure for occupational family and consumer sciences programs in the care and guidance of children, and in food management, production, and services are also offered. Family and consumer sciences education majors are also employed in youth and adult education programs and cooperative extension positions.

Foods, Nutrition, and Dietetics.

This major involves the study of nutrition, food science, and food systems. Career opportunities include positions in food product development and evaluation, consumer services, the food service industry, and school food service. Within the major, students may choose a dietetics emphasis, which provides preparation for graduate study.

By combining this emphasis with an accredited internship or pre-professional practice program, the student may qualify to sit for the registration exam to become a Registered Dietitian, recognized as a highly qualified professional working in management, clinical settings, education and research, business, and private practice. To date, all of the food and nutrition graduates who have taken the exam have passed it on the first attempt.

Curricular Check sheets and Flowcharts

Each major has a specifically color-coded sheet, found in Appendix A. The curricular check sheets list the semester by semester sequencing of courses. The flowcharts identify the courses required in the five areas forming each major: (a) Carson-Newman liberal arts core courses, (b) FCS core courses, (c) specialization courses, (d) supporting discipline courses, and (e) unrestricted electives.

Core Courses

Students in the Department take a common core of family and consumer sciences courses. The 18-hour Family and Consumer Sciences core provides the integrative focus of the profession.

Table 1

FCS Core Classes Listing

Course Number and Title	Semester Hours Credit
121 Professional Orientation	1
135 Personal and Family Management	3
141 Design, Apparel and Culture	3
206 Human Development through the Life Span	4
210 Basic Nutrition <i>or</i> 214 Science of Nutrition	3
301 Family Relationships	3
421 Senior Seminar	<u>1</u>
Total	18

All FCS majors take courses to satisfy the Carson-Newman Liberal Arts Core, specialty courses for their major, and courses from supporting disciplines.

Students majoring in Consumer Services (all emphases) take a 20- hour core of Consumer Services courses:

Table 2

Consumer Services Core Classes Listing

Course Number and Title	Semester Hours Credit
242 Fabric Selection and Clothing Construction	3
247 Fundamentals of Interior Design	3
310 Principles of Food Preparation, Management, and Service	4
338 Personal and Family Finance	3
348 Retailing	3
432 Cooperative Management	<u>4</u>
Total	20

Practical Learning Opportunities

Every class in the FCS curriculum is designed to teach competencies, knowledge, and skills for the “real world.” Some of these classes occur outside the traditional classroom setting, dependent upon the required courses. All students, regardless of major, complete an internship experience or a student teaching experience.

Internships

Internships are required for each major except ECE and FCSE, which require student teaching. There are pre-requisite courses that must be completed before a student can enroll in the internship. All internship experiences account for 3 semester credit hours, which is 150 hours of on-the-job experience. Students purchase the *Comprehensive Internship Manual* the semester prior to the internship through the campus bookstore.

Internship Site Selection/Student Responsibilities

The responsibility of finding a suitable site for the internship is primarily that of the student. The internship *should not be* a continuation of a previous job or practicum experience. Several sites should be compared to determine the site that best fits the needs of the student. Potential sites should be discussed with the faculty member who will supervise the student's internship.

The student does not have the liberty of signing an agreement with the business until the faculty coordinator has had an opportunity to discuss the program with the contact person at the internship site. The student may or may not receive monetary compensation for the internship; this detail is a decision between the intern and the employer. When approval by the faculty coordinator and the division dean is finalized, the student may proceed with the process. The instructor will not approve the student beginning the internship until the following forms have been completed and turned in to the instructor: (a) internship proposal; (b) internship agreement signed by student, faculty adviser, and on-site intern supervisor, and (c) an approved degree plan. *If a student does not complete the required forms in a timely manner and begins the internship without faculty approval, the hours “worked” at the internship site will be considered void until all forms are signed and approved.*

Student Intern Responsibilities

- Meet eligibility requirements. The student must have attained junior status (64 hrs.), be in good academic standing (2.0 GPA), and have completed required prerequisite courses.
- Attend required orientation meeting with faculty coordinator the semester preceding the internships.
- Complete application materials including:
 - Degree Plan (see Student Handbook)
 - Résumé
 - Internship Proposal

- Registered in correct internship course
- Paid tuition
- Identify one or more potential internship sites and arrange for interview(s) (See Internship Site Selection, p. 5)
- Discuss Internship Proposal with faculty coordinator.
- Select most suitable site. Notify contact person at site you choose, write thank you letters to others.
- Arrange appointment with the supervisor at the site you choose to identify specific objectives of your internship and to review the Comprehensive Internship Manual noting the dates for the supervisor's completion of the mid-term and final evaluations, which he/she is to mail directly to the faculty coordinator.
- Provide a copy of Internship Agreement to faculty coordinator and site supervisor.
- Complete all tasks during the internship in a professional manner including writing thank you note to the site supervisor.
- During internship make weekly contact with faculty coordinator via phone, mail, E-mail, or visit.

Cooperating Employer Responsibilities

- Provide an interview with the prospective student intern.
- Discuss the internship program with the faculty coordinator.
- Assign a management employee or yourself as the intern's site supervisor.
- Make provision for all aspects of the intern's program.
- Conduct an exit interview with the intern.

Site Supervisor Responsibilities

- Assist the intern in developing work objectives appropriate for the internship.
- Organize and supervise the entire work experience.
- Prepare other employees for accepting the intern's participation.
- Train the intern in specific skills; give necessary support to the student.
- Facilitate interpersonal relationships between the intern and other employees and see that the intern is not exploited.
- Complete and return to the faculty coordinator the mid-term and final evaluation forms.
- Conference with the student intern after completing each evaluation to discuss strengths and/or needs.
- Conference with faculty coordinator at least once during the internship.

Faculty Coordinator Responsibilities

- Assist student in completing application process.
- Assist student in selecting most suitable site.
- Discuss internship with cooperating employer and/or site supervisor.
- Check forms and reports as they are submitted.
- If site is within 50-60 miles of C-N, will make visit to site to observe/discuss student's progress.
- Evaluate all work submitted by the student.
- Assign grade, taking into consideration site supervisor's evaluation.
- Conduct a follow-up conference with student.
- Make follow-up contact with site supervisor.

Student Teaching

ECE and FCSE majors complete a semester of student teaching that have separate guidelines and requirements. Complete information is available on the [School of Education](#) website.

Courses Requiring Application

Three courses currently offered in the School of Family and Consumer Sciences require reservation forms; (a) CS 432, (b) FN 310, and (c) RTL 242. After the first semester as an FCS major requiring one or more of the aforementioned courses, the reservation form is completed during pre-registration. The reservation forms are located in Appendix B.

Part IV: Professional Development of Students

Student Organizations

Faculty members serve as advisors to [student sections](#) of professional organizations related to the family and consumer sciences profession. Student majors have the opportunity to become involved in any of the sections of professional associations sponsored by the School of FCS. Active organizations and a brief description of each are listed below.

[Carson-Newman Association of Family and Consumer Sciences \(C-NAFCS\)](#)

C-NAFCS is the student unit section of the [American Association of Family and Consumer Sciences](#). As the umbrella organization, each major is considered a “member.” However, the executive board members are paid members at the national level. The executive board helps provide all FCS majors with service, professional development, social, and special interest opportunities. C-NAFCS officers also help orchestrate the annual FCS honors banquet. Application for membership on the executive board occurs during the spring semester.

[Kappa Beta Xi](#)

Kappa Beta Xi is the CN chapter of [Kappa Omicron Nu](#) (KONu), the national family and consumer sciences honor society. Membership requirements include at least eight semester hours completed in family and consumer sciences courses, a standing as a second semester sophomore, rank in the top 25% of their FCS class (freshman-senior), and completion of at least 45 semester hours. Graduate scholarships are available for both Master and Doctoral programs.

[Carson-Newman Student Dietetics Association \(C-NSDA\)](#)

The C-N Student Dietetic Association (C-NSDA) is open to all Food, Nutrition and Dietetics students. The organization holds meetings every other month and usually takes a field trip to professional meetings of the district or state dietetic association on alternate months. The C-NSDA is advised by the Director of the CADE approved Didactic Program in Dietetics (DPD).

Carson-Newman Interior Design Association (CNIDA)

Students hold regular meetings, organize recycling efforts and take meaningful fieldtrips to enhance classroom learning. C-NIDA is often asked to help with event planning and design of college and departmental banquets and social events. These planning events give students interaction with Interior Designers and Event Planners in the area and opportunity for hands-on experience and guidance.

CN-Association for the Education for Young Children (CNAEYC)

The association, a local branch of the [National AEYC](#), is dedicated to service and professional development. Members participate in a variety of community activities such as leading story times and activities at head start centers, and providing babysitting contacts for local families. C-NAEYC also organizes a campus-wide celebration of the Week of the Young Child.

Credentialing Opportunities

Certified Family and Consumer Scientist (CFCS)

The American Association of Family and Consumer Sciences developed a national certification program for professionals in family and consumer sciences. The certification program requires the successful completion of one of three certification exams. To become certified, an individual must earn a minimum of a baccalaureate degree and successfully complete one of three available National Family & Consumer Sciences Examinations: (a) Family and Consumer Sciences Composite Exam, (b) FCS Human Development and Family Studies Examination, or (c) FCS Hospitality, Nutrition, and Food Science Examination.

A study guide for the National Examinations, for those interested in sitting for the exam(s), provides information about the content of the examination, sample test questions and a list of publications and textbooks in each of the content areas covered by the examination. The exam consists

of 150 four-option multiple-choice questions. If certified, professionals complete 75 Professional Development Units every three years.

Certified Family Life Educator

Students who complete the CFS major are positioned to become a Certified Family Life Educator (CFLE) after graduation and related work experience. The [CFLE](#) program is sponsored by the National Council on Family Life Education and individuals who are so certified are qualified to work in a variety of family life education positions.

Basic requirements for certification are:

- B.S. or B.A. degree in family studies
- Content knowledge in ten family life content areas—which are met through course requirements in CFS
- 3,200 hours of related work experience
- Passing the CFLE examination

Interior Design Certifications

These are available to the student who completes the Interior Design Program with a combination of field experience.

[The NCIDQ Examination and Certificate](#)

Completion of the NCIDQ Examination recognizes that an individual has met minimum competency standards for the practice of interior design. NCIDQ's role includes the establishment of standards for education and experience and the administration of a minimum competency examination.

[The LEED AP Examination and Accreditation](#)

LEED Accredited Professional who have demonstrated a thorough understanding of green building practices and principles and familiarity with the LEED requirements, resources and processes.

PART V

DEPARTMENTAL

STUDENT AWARDS

& SCHOLARSHIPS

Awards

The following awards, by vote of the faculty, are presented annually to Family and Consumer Sciences majors.

- CN-AFCS Leadership Award
- FCS Alumni Award
- Family and Consumer Sciences Medal
- Braden Family and Consumer Sciences Award
- Roberts Dietetics Award
- FCS Division Award
- The KONu Outstanding Freshman Award
 - (Selected by members of the Kappa Beta Xi Chapter of Kappa Omicron Nu)

The recipients of the departmental awards are announced at the Department of Family and Consumer Sciences Spring Honors Banquet. All FCS students, friends, and family members are invited to the banquet. The recipients of the Braden Family and Consumer Sciences Award and the KONu Outstanding Freshman Award are also recognized during the campus-wide Honors Convocation. The recipient of the Family and Consumer Sciences Medal is announced and presented during graduation ceremonies. *Membership and involvement in C-NAFCS, AAFCS, FCS student organizations, and departmental activities are considered by faculty when awarding scholarships and departmental awards.*

Award Descriptions

The C-NAFCS Leadership Award is presented to the outstanding senior for leadership and service through the Carson-Newman Association of Family and Consumer Sciences.

The Family and Consumer Sciences Alumni Award is presented to a senior who has shown the greatest growth in professionalism and development of leadership in family and consumer sciences

during four years at Carson-Newman College.

The *Family and Consumer Sciences Division Award* is presented to a family and consumer sciences student of any class who has demonstrated outstanding service to the Family and Consumer Sciences Department.

The *Braden Family and Consumer Sciences Award* is given to a senior family and consumer sciences major who demonstrates scholastic achievement, participation in departmental and other college activities, and the presentation of a professional image.

The *Kappa Omicron Nu Outstanding Freshman Award* is given to the outstanding freshman in family and consumer sciences for high scholastic standing, participation in departmental activities, personality, leadership and service as determined by members of the society.

The *Roberts Dietetics Award* is presented to the outstanding graduate in dietetics. The award is based on scholastic achievement, professional participation, and leadership potential.

The *Family and Consumer Sciences Medal* is given to the Department's outstanding graduating senior. The award is based on outstanding scholarship, departmental and campus leadership, and service and overall professionalism. (The medal is provided by the college and presented during graduation ceremonies).

Scholarships

The following scholarships are awarded annually by the Family and Consumer Sciences Department and are voted upon by the faculty. The recipients of the scholarship are announced at the Annual Spring Honors Banquet. The scholarships are named the:

- Barbara Bible Scholars Scholarship
- Lida Pearl Connaster Memorial Scholarship
- Frank and Jane Orr Hinchey Scholarship
- Steve Hinchey Scholarship

- Barbara Ann Farmer Hughes Scholarship
- Masterson-Collins Scholarship
- Barbara Mason McDougal Endowed Scholarship
- Walter and Elizabeth Peugeot Memorial Endowed Scholarship
- Dr. Evelyn S. Simpson Scholarship
- Orlenda Wagner Scholarship
- Ethel Reed Watters Scholarship

All FCS majors may apply for a Departmental Scholarship. Majors are eligible to receive a scholarship each year they apply. Three blank Scholarship Applications are Located in Appendix C (one for your sophomore, junior, and senior year). Completed scholarship applications must be turned in to the departmental office by the due date which is typically right before spring break. Signs will be posted throughout the building to remind you of the deadline.

Scholarship Descriptions

Barbara Bible Scholars Scholarship

This scholarship was established in 2006 by Raymond and Barbara Bible in honor of Barbara Bible's leadership and service to the Family and Consumer Sciences Department. Three scholarships are awarded each year to a rising sophomore, a rising junior, and a rising senior to outstanding students majoring in Family and Consumer Sciences.

Criteria

- Scholastic achievement
- Citizenship and attitude
- Preference given to students from Hamblen and Sevier Counties
- Eligible to receive scholarship for three consecutive years, providing high scholastic achievement is maintained

The Lida Pearl Connatser Memorial Scholarship

This scholarship was established in 1993 by a bequest from the estate of Lida Pearl Connatser who was a long-time home economics teacher and a 1927 Carson-Newman alumna.

Criteria

- Major in Family and Consumer Sciences
- Academically qualified student
- Preference given to students from Sevier County
- Eligibility for four successive years

The Frank & Jane Orr Hinchey Scholarship

This scholarship was established in 1986 by Frank L. Hinchey in honor of his wife, Dr. Jane Orr Hinchey, whose first two years of college teaching were at Carson-Newman College in the Department of Home Economics. Dr. Hinchey later taught for over 20 years in home economics at Lamar University in Beaumont, Texas, where she was named department chair in 1993. Dr. Hinchey is now retired from teaching.

Criteria

- Major in field of Family and Consumer Sciences
- Show evidence of leadership ability
- Show evidence of potential to make positive contributions to society
- Maintain a 3.0 GPA
- Must be a full time student

Steve F. Hinchey Scholarship

This scholarship in Consumer Studies was established in 2008 by Mr. Frank and Dr. Jane Hinchey of Keller, Texas in honor of their son, Steve, who strongly believes that the well-being of our

society rests upon the strength of the family and the intelligent application of consumer options, both in family and business decision-making.

Criteria

- Family and Consumer Sciences majors in Consumer Studies Leadership potential in their consumer studies
- Outstanding scholastic records
- Evidence of being able to make a positive contribution to society

Barbara Ann Farmer Hughes Scholarship

The Barbara Farmer Hughes Scholarship was established in 1985 by this CNC Distinguished Alumna. Dr. Hughes, a graduate of the Department of Home Economics at CNC, received a M.S. in dietetics from the Ohio State University, her Masters of Public Health from the University of NC at Chapel Hill, and her PhD from Walden University. She is a registered dietitian and President of Barbara F. Hughes Consultants.

Criteria

- Major in Family and Consumer Sciences
- Academically qualified student
- Show evidence of financial need
- Preference given to students majoring in dietetics or nutrition
- Eligible to receive scholarships for four successive years

Masterson-Collins Scholarship

Dr. and Mrs. Samuel C. Collins established this scholarship in 1972 in honor of Lena Masterson Collins and Samuel Cornette Collins. Dr. Collins was a chemistry professor at C-N who later taught and conducted internationally recognized research at MIT. Mrs. Collins was a 1927 alumna and 1928 instructor of this department.

Criteria

- Junior or senior in Family and Consumer Sciences and/or Chemistry
- Demonstrates high standards of scholarship in the sciences
- Demonstrates promise in chosen field

Barbara Mason McDougal Endowed Scholarship

This scholarship was established in 2002 by contributions from Mr. Sam McDougal and Dr. Barbara Mason McDougal of Jefferson City, Tennessee in honor of Dr. McDougal, professor of Home Economics at Carson-Newman from 1952 – 1980. The Child Development Laboratory was opened in 1954 under the directorship of Dr. McDougal. In 1980 Dr. McDougal became Dean of Students and later Vice-President of Student Development at Carson-Newman, the first woman to hold this position.

Criteria

- Junior or Senior
- Academically qualified student
- Maintain a 3.0 GPA
- Preference given to FCS student majoring in Child and Family Studies

Walter and Elizabeth Peugeot Memorial Scholarship

This scholarship was established in 2001 by the Elizabeth S. Peugeot Trust, represented by Richard S. Peugeot of Nashville, Tennessee. Mrs. Peugeot was the grandmother of Lindsay Thaller, a 2001 graduate in Early Childhood Education. The scholarship fund was formed as an expression of gratitude for Lindsay's C-N experience.

Criteria

- Academically qualified students
- First preference is given to students who are Family and Consumer Sciences majors with an emphasis in Early Childhood Education

Evelyn S. Simpson Scholarship

This scholarship was established in honor of Dr. Evelyn S. Simpson by FCS alumni, students, faculty, and friends. Dr. Simpson served as coordinator of the Department of Home Economics at Carson-Newman from 1965 - 1980. Her major accomplishments included:

- Establishment of the FCS Honor Society (KONu)
- State Department of Education approval of the FCS Education Program
- ADA Approval of the Dietetics program
- Growth in number of faculty and programs

Criteria

- Sophomore or junior in Family and Consumer Sciences
- 2.5 GPA or better
- Leadership potential

Orlena Wagner Scholarship

This scholarship was established in 1974 by Miss Hildred Wagner of Hampton, TN. The scholarship fund was established for those students from the Elizabethton area with interest in family and consumer sciences as a college major.

Criteria

- First preference is given to a student recommended from Hampton High School
- Second preference is given to a student recommended from any high school in the Watauga Baptist Association
- Possess those qualities of Christian character, honesty, and sensitivity to the needs of others and high moral ideals which contribute to the development of a mature, useful adult

Ethel Reed Watters Scholarship

This scholarship was established in 1986 in honor of Mrs. Ethel Reed Watters, FCS department coordinator from 1957-65. Her leadership provided the planning for the establishment of the FCS Education Program.

Criteria

- Family and Consumer Sciences Major
- Exemplifying the characteristics of an academically qualified Christian student
- Demonstrated concern for strengthening family life
- Selected by the Department of Family and Consumer Sciences

Professional Organization Scholarships

Tennessee Association of Family and Consumer Sciences (TAFCS)

Qualifications

- Must be a college freshman (who will be a rising sophomore) currently enrolled in his/her second semester or third quarter in family and consumer sciences curriculum in an accredited institution leading to a degree
- Student must have an overall B average while carrying a full student load for that institution
- Must be a paid member of both local SMS chapter and the American Association of Family and Consumer Sciences
- Must indicate enrollment for complete sophomore year in family and consumer sciences Program or forfeit to second place candidate
- Must use scholarship in academic year awarded
- Must remain in family and consumer sciences program for that year while receiving scholarship aid
- Must have a positive attitude toward family and consumer Sciences

Tennessee Dietetic Association Scholarship

Qualifications

- Tennessee resident
- Financial need
- Meritorious credentials
- In one of the following accredited categories
 - Appointee to a dietetic internship
 - Second year student in a Coordinated Undergraduate Program in Dietetics
 - Second year student in a Dietetic Technician Program
 - Senior student in a Didactic Program in Dietetics
 - Advanced degree student with prior approval for qualifying

Application

Time to apply: June 1 to be considered for an award during the upcoming academic year.

Requests for application: Honored between February 15 and May 1. Application forms may be requested from: The ADA Didactic Program Director at Carson-Newman College.

Credentials to Accompany Application

- Completed application form (preferably typewritten).
- Official transcripts.
- Personal letter indicating need and professional goals (preferably typewritten).
- Letter from academic advisor.
- Letter from a registered dietitian or professional who has supervised clinical or field experience.

Awards

Recipients of awards will be officially announced following approval by the Executive Board of the Tennessee Dietetic Association at the fall TDA meeting in November. In past years the awards have ranged from \$200 to \$1000 depending on funds available.

ADA Foundation Undergraduate Scholarships for Dietetics Students

Application is made in the sophomore or junior year; the award is given for study in the junior or senior year.

Qualifications

- Completion of the academic requirements in an accredited college or university for standing as a junior in a curriculum of foods and nutrition, institution management, or the equivalent
- Demonstration of financial need
- Evidence of scholarship and professional potential

Application

Time to apply: The year before the scholarship is applicable. Apply in September for the next academic year.

Requests for applications: Honored between September 15 and January 15.

Application forms may be obtained from [The American Dietetic Association](#).

Application submission: Completed scholarship applications must be postmarked no later than February 15 and addressed to the attention of the Scholarship Committee which will review all applications and will select recipients during the month of June. Applicants will be notified by July.

Awards

Number of awards varies from year to year. Awards range from \$500 to \$1,000; amounts vary. Some scholarships require students to reside or study in a specific state.

This information is requested in the application form.

Knoxville Chapter: The National Home and Community Section of AAFCS**Award**

A paid year's membership for the American Association of Family and Consumer Sciences (AAFCS) organization presented by the Knoxville Area Home and Community Section of AAFCS.

Criteria

- Graduating senior
- Involvement in professional organizations at Carson-Newman
- Leadership

Appendix A

Checksheet and Flow Charts for all Majors in the School of Family and Consumer Sciences

Carson-Newman College
 Department of Family and Consumer Sciences
Child & Family Studies
 Curricular Checksheet

First Year:

16 HRS			FIRST SEMESTER			16 HRS			SECOND SEMESTER		
<u>Sem Hrs</u>						<u>Sem Hrs</u>					
___ 3	SC	ENG 101	Writing & Lit I	___ 3	SWP	ENG 201	Writing & Lit II				
___ 3	SMS	MATH 105	Basic Concepts I	___ 3	LA	LA 101	Intro Liberal Arts				
___ 3	SBT	REL 101	Old Testament	___ 3	SBT	REL 102	New Testament				
___ 3	SC	COMM 135/230	_____	___ 4	SPR	CFS 206	Human Dev				
___ 1		FCS 121	Prof Orientation	___ 3	SMS	PHYS 102	Basic Phys & Astro				
___ 3		CS 135	Pers & Fam Mgt								

Second Year:

15 HRS			FIRST SEMESTER			16 HRS			SECOND SEMESTER		
<u>Sem Hrs</u>						<u>Sem Hrs</u>					
___ 3		FN 210	Basic Nutrition	___ 4		FN 310	Princ. of Foods				
___ 3		CFS 207	Inf & Early Child	___ 3		RTL 141	Design, Cult, Env				
___ 3	SWP	FINE ARTS	ELECTIVE	___ 3		ELECTIVE					
___ 3	SMS	BIOL 102/CHEM100		___ 3		ELECTIVE					
___ 3	SPR	PCS 101/102/HIST 201/202		___ 3		ELECTIVE					

Third Year:

15 HRS			FIRST SEMESTER			15 HRS			SECOND SEMESTER		
<u>Sem Hrs</u>						<u>Sem Hrs</u>					
___ 3		CFS 301	Family Relations	___ 3		CFS 304	Parenting				
___ 3		CFS 305	Family Science	___ 3		CS 338	Pers & Fam Fin				
___ 3	SWP	HIST 133,134,135		___ 3		FCSE 424	Meth of Tch FCSE				
___ 3		CFS 414	Prog Yg Ch I	___ 1		CFS 427	Practicuum				
___ 3		CS 333	Pub Policy & Fam	___ 3		ELECTIVE					
				___ 3		ELECTIVE					

Fourth Year:

17 HRS			FIRST SEMESTER			15 HRS			SECOND SEMESTER		
<u>Sem Hr</u>						<u>Sem HR</u>					
___ 3	SC	ENG 301	Writing & Lit III	___ 3		CFS 465	Internship				
___ 4		CS 432	Cooperative Mgt	___ 3		ELECTIVE					
___ 3		PSY 421	Human Sexuality	___ 3		ELECTIVE					
___ 1	SS	FCS 421	Senior Seminar	___ 3		ELECTIVE					
___ 3		CFS 407	Adv Topics CFS	___ 3		ELECTIVE					
___ 3		ELECTIVE									

128 hours (62 J/S credits)

Transferring into program after freshman year may delay your graduation date.

CARSON-NEWMAN COLLEGE
DEPARTMENT OF FAMILY AND CONSUMER SCIENCES

A MAJOR in Child and Family Studies is a combination of:

(a) General Education	+Family and Consumer Sciences Core	+Specialization	+Supporting Disciplines	+Unrestricted Electives
<u>Hours</u>	<u>Hours</u>	<u>Hours</u>	<u>Hours</u>	<u>Hours</u>
Lib Arts 101 2	FCS 121 Prof Orientation 1	CFS 207 Infant & Earl Ch 3	PSY 421 Hum Sexuality 3	
Biblical Traditions	CS 135 Pers Fam Mgt 3	CFS 304 Parenting 3		
REL 101 3	RTL 141 Design Culture 3	CFS 305 Family Sciences 3		
REL 102 3	Env 3	CFS 407 Cur Topics 3		
Communications	CFS 206 Hum Dev (b)	CFS 414 Prog Plan I 3		
ENG 101 3	FN 210 Basic Nutrition 3	CS 333 Public Pol Fam 3		
COMM 135 or 230 3	CFS 301 Family Rel 3	CS 338 Per Fam Fin 3		
Math and Science	FCS 421 Senior Seminar (b)	CS 432 Cooperative Mgt 4		
MATH 105 3		CFS 465 Internship CFS 3		
LAB SCIENCES		CFS 427 Met Prac 1		
Biol102/ Chem 100/PHYS 102 6		FCSE 424 Met of T FCSE 3		
Personal/Social Responsibility		FN 310 Prin. of Foods 4		
PSC101/102/				
HIST 201/202 3				
CFS 206 4				
Enhance World Perspective				
HIST 133, 134, 135 3				
ENG 201 3				
ENG 301 3				
ENG 310, MUS 133, ART 210, TH 110, Music Ensembles 3				
Senior Capstone				
FCS 421 Senior Seminar 1				
Totals 43	13	35	3	34

Notes (a) Select from General Education Program unless specified

(b) General Education Credit

=128 hrs.

Carson-Newman College
 Department of Family and Consumer Sciences
Child & Family Studies: Early Childhood Education (PreK-3) Emphasis
 Curricular Checksheet

First Year:**16 HRS FIRST SEMESTER****Sem Hrs**

___ 3	SC	ENG 101*	Writing & Lit I
___ 3	SMS	MATH 105	Basic Concepts I
___ 3	SBT	REL 101	Old Testament
___ 3	SC	COMM 135/230*	_____
___ 1		FCS 121*	Prof Orientation
___ 3		CS 135*	Pers & Fam Mgt

18 HRS SECOND SEMESTER**Sem Hrs**

___ 3	SWP	ENG 201*	Writing & Lit II
___ 3		MATH 106	Basic Concepts II
___ 3	SBT	REL 102	New Testament
___ 4	SPR	CFS 206*	Human Dev
___ 3	SMS	PHYS 102	Basic Phys & Astro
___ 2	LA	LA 101	Intro. Liberal Arts
		PRAXIS I	_____

Second Year:**18 HRS****FIRST SEMESTER****Sem Hrs**

___ 3		EDUC 204*	Instruc Tech
___ 3		FN 210*	Basic Nutrition
___ 3		CFS 207*	Inf & Early Child
___ 3		EDU 303*	Foundations of Educ
___ 3		ELECTIVE	_____
___ 3	SPR	PCS 101/102/HIST 201/202	

15 HRS SECOND SEMESTER**Sem Hrs**

___ 3	SMS	BIOL 102	Env Sci
___ 3		EDUC 341*	Child & Sch: K-4
___ 3		RTL 141*	Design, Cult, Env
___ 3		ENG 204	Lit Child & Yo
___ 3		SPED 313*	Surv Excep Per

Third Year:**18 HRS FIRST SEMESTER****Sem Hrs**

___ 3		CFS 301*	Family Relations
___ 3		CFS 305*	Family Science
___ 3	SWP	HIST 133,134,135	
___ 3		CFS 414*	Prog Yg Ch I
___ 3		EDUC 314*	Literacy Dev
___ 3		EDUC 404*	Assess & Eval

18 HRS SECOND SEMESTER**Sem Hrs**

___ 3		CFS 304*	Parenting
___ 3		CFS 404*	Adm Prog
___ 3		CFS 415*	Prog Yg Ch II
___ 4		EDUC 414*	Read Inst
___ 1		ELECTIVE	_____
		PRAXIS II	_____

Fourth Year:**17 HRS FIRST SEMESTER****Sem Hr**

___ 3	SC	ENG 301	Writing & Lit III
___ 4		EDUC 415*	Math/Sci/SS Methods
___ 3		PE 302	Tch Health & PE
___ 1	SS	FCS 421*	Senior Seminar
___ 3		CFS 407*	Adv Topics CFS
___ 3	SWP	Fine Arts Elective	

12 HRS SECOND SEMESTER**Sem HR**

___ 2		EDUC 463*	Seminar in Stud Teach
___ 5		EDUC 465*	
___ 5		EDUC 467*	

128 hours (62 J/S credits)

*Requires C or Better

Courses in bold must be completed prior to admission to Teacher Education
 Transferring into program after freshman year may delay your graduation date.

CARSON-NEWMAN COLLEGE
DEPARTMENT OF FAMILY AND CONSUMER SCIENCES

A MAJOR in Child and Family Studies with an Emphasis in Early Childhood Education is a combination of:

(a) General Education	+Family and Consumer Sciences Core	+Specialization	+Supporting Disciplines	+Unrestricted Electives
<u>Hours</u>	<u>Hours</u>	<u>Hours</u>		
Lib Arts 101 2	FCS 121 Prof Orientation 1	CFS 207 Infant & Earl Ch 3	ENG 204 3	
Biblical Traditions	CS 135 Pers Fam Mgt 3	CFS 304 Parenting 3	EDUC 204 3	
REL 101 3	RTL 141 Design Culture 3	CFS 305 Family Sciences 3	EDUC 303 3	
REL 102 3	Env 3	CFS 404 Admin Prog 3	EDUC 314 3	
Communications	CFS 206 Hum Dev (b)	CFS 407 Cur Topics 3	EDUC 341 3	
ENG 101 3	FN 210 Basic Nutrition 3	CFS 414 Prog Plan I 3	EDUC 403 3	
COMM 135 or 230 3	CFS 301 Family Rel 3	CFS 415 Prog Plan II 3	EDUC414 4	
Math and Science	FCS 421 Senior Seminar (b)		EDUC 415 4	
MATH 105 3			EDUC 463 2	
LAB SCIENCES			EDUC 465 5	
Biol 102 3			EDUC 467 5	
PHYS 102 3			MATH 106 3	
Personal/Social Responsibility			SPED 313 3	
PSC, HIST, 3			PE 302 3	
CFS 206 4				
Enhance World Perspective				
HIST 133, 134, 135 3				
ENG 201 3				
ENG 301 3				
ENG 310, MUS 133, ART 210, TH 110, Music Ensembles 3				
Senior Capstone				
FCS 421 Senior Seminar 1				
Totals 43	13	21	47	4

Notes (a) Select from General Education Program unless specified
 (b) General Education Credit

=128 hrs.

Carson-Newman College
Department of Family and Consumer Sciences
Consumer Services Major
Curricular Checksheet

First Year:

15 HRS		FIRST SEMESTER		15 HRS		SECOND SEMESTER	
Sem Hr				Sem Hr			
___ 3	SC	ENG 101	Writing & Lit 1	___ 3	SC	COMM 135 or 230	___
___ 3	SBT	REL 101	Old Testament	___ 3	SMS	MATH	_____
___ 2	LA	LA 101	Intro Liberal Arts	___ 3	SBT	REL 102 New Testament	
___ 3	SMS	LAB SCIENCE		___ 3	SMS	LAB SCIENCE	_____
___ 3		CS 135	Pers & Fam Mgt	___ 3		RTL 141 Design, Culture,	
___ 1		FCS 121	Prof Orientation			Near Env	

Second Year:

15 HRS		FIRST SEMESTER		16 HRS		SECOND SEMESTER	
Sem Hr				Sem HR			
___ 3	SWP	ENG 201	Writing & Lit II	___ 3		CIS 215 Bus Info Tools	
___ 3	SPR	PSC, ECON, HIST, or PHIL		___ 3	SWP	HIST 133, 134, 135	
___ 3		ECON 210	Microeconomics	___ 4	SPR	CFS 206 Human Dev	
___ 3		INTD 247	Fund of Int Design	___ 3		CS 338 Per & Fam Fin	
___ 3		ELECTIVE		___ 3		FN 214 Science of Nutrition	

Third Year:

17 HRS		FIRST SEMESTER		17 HR		SECOND SEMESTER	
Sem Hr				Sem HR			
___ 3		ACCT 201	Prin of Accounting I	___ 3	SWP	ENG 310, MUS 133,	
___ 3		MGT 201	Prin of Bus Mgt			ART 210, TH 110, or	
___ 3		CS 339	Financial Counseling			MUS Ensembles	
___ 4		FN 310	Principles of Food Prep	___ 3		ART 104/ART 113 or ___ 3	
___ 1		RTL 348	Retailing	___ 3	COMM	123	
		ELECTIVE	_____	___ 3		CS 333 Pub Pol & Fam	
				___ 3		RTL 242 Tex & Clothing	
				___ 5		ELECTIVE	_____

Fourth Year:

17HRS		FIRST SEMESTER		16 HRS		SECOND	
Sem Hr				Sem HR			
___ 3	SWP	ENG 301	Writing & Lit III	___ 3		ACCT, BAD, ECON,	
___ 3		MKT 300	Prin of Marketing			MGT elective	
___ 4		CS 432	Cooperative Mgt	___ 3		CFS 301 Family Relations	
___ 1	SS	FCS 421	Senior Seminar	___ 3		CS 467 Internship in CS	
___ 3		RTL ELECTIVE	_____	___ 7		ELECTIVE	_____
___ 3		ELECTIVE	_____				

128 hours (36 J/S credits)

Transferring into program after freshman year may delay your graduation date.

CARSON-NEWMAN COLLEGE
DEPARTMENT OF FAMILY AND CONSUMER SCIENCES

A MAJOR in Consumer Services is a combination of:

(a) General Education	+Family & Consumer Sciences Core	+Specialization	+Supporting Disciplines	+Unrestricted Electives
<u>Hours</u>	<u>Hours</u>	<u>Hours</u>	<u>Hours</u>	<u>Hours</u>
Liberal Arts 101 2	FCS 121 Prof Orientatio1	Consumer Services Core	Business Electives 18	<i>May Choose Concentration</i> Comm Political Sci Photography Others
Biblical Traditions	CS 135 Pers Fam Mgt 3	CS 338 Pers Family	OR	
REL 101 3	RTL 141 Design Culture	Finance 3	Business Administration	
REL 102 3	Env 3	CS 432 Cooperative Mgt 4	Minor	
Communications	CFS 206 Hum Dev (b)	FN 310 Prin of Foods 4	ACCT 201 3	
ENG 101 3	FN 214 Science of Nut 3	INTD 247 Fund of	CIS 215 3	
COMM 135 or 230 3	CFS 301 Family Rel 3	Int Design 3	ECON 210 3	
Math and Science	FCS 421 Senior Seminar	RTL 242 Textiles/	MGT 201 3	
MATH 3	(b)	Clo Cons 3	MKT 300 3	
LAB SCIENCES 6		RTL 348 Retailing 3	ACCT, BAD, ECON, MGT 3	
Personal/Social Responsibility		20	elective	
PSC, ECON, HIST, PHIL 3		Consumer Services	Fine Arts	
CFS 206 4		CS 333 Public Policy	ART 104 or 113	
Enhance World Perspective		and Family 3	Or	
HIST 133, 134, 135, 3		CS 339 Financial	COMM 123 3	
ENG 201 3		Counseling 3		
ENG 301 3		CS 467 Internship in CS 3		
ENG 310, MUS 133, 3		RTL Elective 3		
ART 210, TH 110, Music 3		20		
Ensembles 3				
Senior Capstone				
FCS 421 Senior Seminar 1				
Totals 43	13	32	21	19

Notes

(a) Select from General Education Program unless specified

(b) General Education Credit

=128 hrs.

CARSON-NEWMAN COLLEGE
DEPARTMENT OF FAMILY AND CONSUMER SCIENCES

A MAJOR in Consumer Services with an Emphasis in Interior Design is a combination of:

(a) General Education		+Family and Consumer Sciences Core		+Specialization		+Supporting Disciplines	+Unrestricted Electives
	<u>Hours</u>	<u>Hours</u>		Consumer Services Core		Art	
Liberal Arts 101	2	FCS 121 Prof Orient	1	RTL 242 Text & Clo Cons	3	Art Elective	6
		CS 135 Pers Fam Mgt	3	INTD 247 Fund of ID	3		
Biblical Traditions		RTL141 Design Culture		FN 310 Prin of Food	4	RTL	
REL 101	3	Near Envir	3	CS 338 Pers Family Finan	3	Retail Elective	3
REL 102	3	CFS 206 Hum Dev	(b)	RTL 348 Retailing	3		
Communications		FN 214 Science of Nut	3	CS 432 Cooperative Mgmt	4	Business	
ENG 101	3	CFS 301 Family Rel	3		20	Business Elective	3
COMM 135/230	3	FCS 421 Senior Seminar	(b)	Interior Design			
Math & Science				246 Arch Drafting Studio I	3		
MATH 105	3			252 Space Planning			
LAB SCIENCES	6			Studio II	3		
Personal/Social Responsibility				254 Mat & Finishes	3		
PSC 101/102 or				348 Kitchen & Bath			
HIST 201/202	3			Studio III	3		
CFS 206	4			350 Residential Design			
World Perspective				Studio IV	3		
HIST 133/134/135	3			354 AutoCAD	3		
ENG 201	3			445 History of Interior I	3		
ENG 301	3			450 Commercial Design			
ART 210	3			Studio V	3		
Senior Capstone Course				455 History of Interiors II	3		
FCS 421	1			459 Bus Proc in ID	3		
				469 Internship in ID	3		
					33		
Totals	43		13		53		12
							7

Notes

(a) Select from General Education Program unless specified

(b) General Education Credit

Carson-Newman College
Department of Family and Consumer Sciences
Consumer Services: Retailing Emphasis
Curricular Checksheet

First Year:

15 HRS	FIRST SEMESTER	15 HRS	SECOND SEMESTER
<u>Sem Hr</u>		<u>Sem Hr</u>	
___ 3	SC ENG 101 Writing & Lit 1	___ 3	CIS 215
___ 3	SBT REL 101 Old Testament	___ 3	SMS MATH _____
___ 2	LA LA 101 Intro Liberal Arts	___ 3	SBT REL 102 New Testament
___ 3	SMS LAB SCIENCE	___ 3	SMS LAB SCIENCE _____
___ 3	CS 135 Pers & Fam Mgt	___ 3	RTL 141 Design, Culture, Near Env.
___ 1	FCS 121 Prof Orientation		

Second Year:

15 HRS	FIRST SEMESTER	16 HRS	SECOND SEMESTER
<u>Sem Hr</u>		<u>Sem Hr</u>	
___ 3	SWP ENG 201 Writing & Lit II	___ 3	SC COMM 135 or 230 _____
___ 3	SPR PSC, ECON, HIST, or PHIL	___ 3	SWP HIST 133, 134, 135
___ 3	INTD 247 Fund of Int Design	___ 4	SPR CFS 206 Human Dev
___ 3	RTL 242 Tex & Clothing	___ 3	FN 214 Science of Nutrition
___ 3	BUS ELECTIVE _____	___ 3	BUS ELECTIVE _____

Third Year:

17 HRS	FIRST SEMESTER	17 HRS	SECOND SEMESTER
<u>Sem Hr</u>		<u>Sem Hr</u>	
___ 3	SWP ENG 301 Writing & Lit III	___ 3	SWP ART 210
___ 3	CS 338 Per & Fam Finance	___ 3	RTL 351 Consumer Behavior
___ 4	FN 310 Principles of Food Prep	___ 3	RTL 441 Merchandise Mgt
___ 3	RTL 348 Retailing	___ 3	RTL 442 Adv Sales Promotion
___ 3	RTL 443 Visual Pres Store Des	___ 3	RTL 468 Internship
___ 1	ELECTIVE _____	___ 2	ELECTIVE _____

Fourth Year:

17HRS	FIRST SEMESTER	16 HRS	SECOND SEMESTER
<u>Sem Hr</u>		<u>Sem Hr</u>	
___ 4	CS 432 Cooperative Mgt	___ 3	CFS 301 Family Relations
___ 1	SS FCS 421 Senior Seminar	___ 3	RTL 444 Fashion Merchandising
___ 3	BUS ELECTIVE _____	___ 3	BUS ELECTIVE _____
___ 3	BUS ELECTIVE _____	___ 3	ELECTIVE _____
___ 3	ELECTIVE _____	___ 4	ELECTIVE _____
___ 3	ELECTIVE _____		

128 hours (36 J/S credits)

Transferring into program after freshman year may delay your graduation date.

CARSON-NEWMAN COLLEGE
DEPARTMENT OF FAMILY AND CONSUMER SCIENCES

A MAJOR in Consumer Services with an Emphasis in Retailing is a combination of:

(a) General Education		+Family and Consumer Sciences Core	+Specialization	+Supporting Disciplines	+Unrestricted Electives
Hours	Hours	Hours	Hours	Hours	
Liberal Arts 101	2	FCS 121 Prof Orientation	Consumer Services Core	Business Electives	18
Biblical Traditions		1	RTL 242 Textiles Cloth	OR	
REL 101	3	CS 135 Pers Fam Mgt	Const 3	Business Administration	
REL 102	3	3	INTD 247 Fund of	minor:	
Communications		RTL 141 Design Culture	Int Design 3	ACCT 201	3
ENG 101	3	Near Envir	FN 310 Prin of Food 4	CIS 215	3
COMM 135/230	3	3	CS 338 Pers Family	ECON 210	3
Math & Science		CFS 206 Hum Dev	Finance 3	MGT 201	3
MATH	3	(b)	RTL 348 Retailing 3	MGT 300	3
LAB SCIENCES	6	FN 214 Science of Nut	CS 432 Cooperative	ACCT, BAD, ECON, OR	3
Personal /Social Responsibility		3	Mgt 4	MGT elective	
PSC 101/102 or		CFS 301 Family Rel	20	OR	
HIST 201/202	3	3	Retailing	Marketing Minor:	
CFS 206	4	FCS 421 Senior Seminar	351 Consumer Behav 3	COMM 322	3
World Perspective		(b)	441 Merchan Mgt 3	COMM 421	3
HIST 133/134/135	3		442 Adver Sales Prom 3	MGT 201	3
ENG 201	3		443 Visual Presentation	MGT 306	3
ENG 301	3		Store Design 3	MGT 300	3
ART 210	3		444 Fashion Merchan (c) 3	MGT 407	3
Senior Capstone			468 Internship in Retail 3		
FCS 421 Sen Seminar	1		18		
Totals	43	13	38	18	16

Notes a) Select from General Education Program unless specified

b) General Education Credit

(c) May be substituted with a business elective

=128 hrs.

Carson-Newman College
Department of Family and Consumer Sciences
Family and Consumer Sciences Education Major
Curricular Checksheet

First Year:

16 HRS	FIRST SEMESTER	17 HRS	SECOND SEMESTER
<u>Sem Hrs</u>		<u>Sem Hrs</u>	
___ 3	SC	___ 3	SWP
___ 3	SMS	___ 3	SC
___ 3	SBT	___ 3	SBT
___ 3	SMS	___ 3	
___ 1	FCS 121*	___ 3	SMS
___ 3	CS 135*	___ 2	ILA
			PRAXIS I _____

Second Year:

16 HRS	FIRST SEMESTER	17 HRS	SECOND SEMESTER
<u>Sem Hrs</u>		<u>Sem Hrs</u>	
___ 3	INTD 247*	___ 3	EDUC 204*
___ 3	ELECTIVE	___ 3	SPSR
___ 4	SPR	___ 3	FN 210/214*
___ 3	EDUC 303*	___ 3	SWP
___ 3	SWP	___ 1	ELECTIVE**
		___ 3	RTL 242

Third Year:

18 HRS	FIRST SEMESTER	17 HRS	SECOND SEMESTER
<u>Sem Hrs</u>		<u>Sem Hrs</u>	
___ 3	CFS 301*	___ 3	FCSE 320*
___ 3	CFS 305*	___ 4	FN 310*
___ 3	EDUC 350*	___ 3	CFS 304*
___ 3	SWP	___ 3	EDUC 450*
			Teaching
___ 3	SPED 313*	___ 2	ELECTIVE
___ 3	ELECTIVE		PRAXIS II _____

Fourth Year:

16 HRS	FIRST SEMESTER	12 HRS	SECOND SEMESTER
<u>Sem Hr</u>		<u>Sem HR</u>	
___ 3	ELECTIVE	___ 2	EDUC 463*
___ 4	CS 432*	___ 5	EDUC 465*
___ 3	FCSE 424*	___ 5	EDUC 467*
___ 1	FCSE 427*		
___ 3	CS 338*		
___ 3	ELECTIVE		
___ 1	SS		
	FCS 421*		

128 hrs (62 J/S credits): BS Degree in Family and Consumer Sciences Education
 Course in **bold** must be completed prior to admission to Teacher Education.

*Requires a C or better.

** An occupational endorsement adds 12 hours to the C-N graduation requirements of 128 hours. For an endorsement in Early Childhood Care & Services: Add FCSE 425 (3), CFS 404 (3), CFS 414 (3), and CFS 465 (3). For an endorsement in Food Production & Management Services: Add FCSE 425 (3), FN 313 (3), FN 314 (3), and FN 466 (3). You may use your elective hours to satisfy these requirements unless otherwise specified.

Transferring into the program after freshman year may delay your graduation date.

CARSON-NEWMAN COLLEGE
DEPARTMENT OF FAMILY AND CONSUMER SCIENCES

A MAJOR in Family and Consumer Sciences Education is a combination of:

(a) Liberal Arts Core	+Family and Consumer Sciences Core	+Specialization	+Supporting Disciplines	+Unrestricted Electives
Hours	Hours	Hours	Hours	*
Liberal Arts 101 2	FCS 121 Prof Orientation 1	CFS 304 Parenting 3	EDUC 204 Inst Tech 3	
Biblical Traditions	CS 135 Pers Fam Mgt 3	CFS 305 Family Sciences 3	EDUC 303 Fund of Ed 3	
REL 101 3	RTL 141 Design Culture 3	CS 338 Pers Family Finance 3	EDUC 350 Div in Schools 2	
REL 102 3			EDUC 450 Effec Teach 3	
Communications	CFS 206 Hum Dev (b) 3	CS 432 Cooperative Mgt 4	EDUC 463 Seminar 2	
ENG 101 3	FN 210, 214 Nutrition 3	FCSE 320 Intro FCSE 2	EDUC 465 Student Teaching 5	
COMM 135/230 3	CFS 301 Family Rel 3	FCSE 424 Meth of FCSE 2	EDUC 467 Student Teaching 5	
Math & Science	FCS 421 Senior Seminar (b) 3	FCSE 427 Practicum 1	SPED 313 Survey Excep Per 3	
MATH 3		FN 310 Prin of Food 4		
LAB SCIENCES 3		INTD 247 Fund of Int Des 3		
Biol 101/102 Chem 100 6		RTL 242 Text & Clo Cons 3		
Personal /Social Responsibility				
PSC, ECON, HIST, PHIL 3				
CFS 206 4				
World Perspective				
HIST 133,134,135 3				
ENG 201 3				
ENG 301 3				
ENG 310, MUS 133, ART 210, TH 110, Music Ensembles 3				
Senior Capstone				
FCS 421 1				
Totals 43	13	29	26	17

Carson-Newman College
Department of Family and Consumer Sciences
Food, Nutrition & Dietetics
Curricular Checksheet

First Year:

16 HRS				16 HRS			
FIRST SEMESTER				SECOND SEMESTER			
<u>Sem Hrs</u>	<u>Goal</u>			<u>Sem Hrs</u>	<u>Goal</u>		
___ 2	LA	LA 101	Intro. Lib Arts	___ 3	SWP	ENG 201*	Writing & Lit II
___ 3	SC	ENG 101*	Writing & Lit I	___ 3	SBT	REL 102	New Testament
___ 3	SBT	REL 101	Old Testament	___ 3	SPR	PSY 101/102 or SOC 101*	_____
___ 3		CS 135*	Pers & Fam Mgt	___ 4	SMS	CHEM 102*	Intro Org & Bio
___ 4	SMS	CHEM 101*	Intro Chemistry	___ 3		FN 114*	Food & People
___ 1		FCS 121*	Prof Orientation				

Second Year:

17 HRS				17 HRS			
FIRST SEMESTER				SECOND SEMESTER			
<u>Sem Hrs</u>	<u>Goal</u>			<u>Sem Hrs</u>	<u>Goal</u>		
___ 3		ACCT 201*	Prin of Acct I	___ 3	CIS 215*	Bus Inform Tools	
___ 4	SMS	BIOL 207*	Hum Anat & Phys	___ 3	SC	COMM 135 or 230*	_____
___ 4	SPR	CFS 206*	Human Dev Lifespan	___ 3	SPR	ECON 204 or 210*	_____
___ 3		FN 214*	Science of Nutrition	___ 4	SMS	BIOL 208*	Hum Anat & Phys
___ 3		RTL 141	Design, Culture, Env	___ 4		FN 310*	Princ of Food Prep

Third Year:

16 HRS				15 HRS			
FIRST SEMESTER				SECOND SEMESTER			
<u>Sem Hrs</u>	<u>Goal</u>			<u>Sem Hrs</u>	<u>Goal</u>		
___ 3		Fine Arts	_____	___ 4	SMS	BIOL 316*	Gen Microbiology
___ 4	SMS	MATH 201*	Statist Concepts	___ 3		MGT 300*	Princ Marketing
___ 3	SWP	ENG 301*	Writing & Lit III	___ 3		FN 311*	Nutr Ed & Com
___ 3		CFS 301*	Family Relationship	___ 3		FN 466*	Field Exp Food, Nutr
___ 3		FN 316*	Experimental Food Sci	___ 2		ELECTIVE	_____

Fourth Year:

16 HRS				15 HRS			
FIRST SEMESTER				SECOND SEMESTER			
<u>Sem Hrs</u>	<u>Goal</u>			<u>Sem Hrs</u>	<u>Goal</u>		
___ 3	SWP	HIST 133, 134, or 135		___ 2	SMS	BIOL 306*	Medical Term II
___ 2	SMS	BIOL 305*	Medical Term I	___ 3		FN 313*	Quantity Food Prod
___ 4		CS 432*	Cooperative Mgt.	___ 3		FN 314*	Food Service Mgt
___ 1	SS	FCS 421*	Senior Seminar	___ 3		FN 412*	Med Nutr Therapy
___ 3		FN 411*	Advanced Nutrition	___ 1		FN 421*	Semr in Dietetics
___ 3		ELECTIVE	_____	___ 3		ELECTIVE	_____

128 hours (48 J/S credits)

Transferring into program after freshman year may delay your graduation date.

The Foods, Nutrition, and Dietetics Program (DPD) is accredited by the Commission on Accreditation for Dietetics Education (CADE) of the American Dietetic Association (ADA) to 2016.

2.8 GPA required to be admitted to DPD upper division coursework and to graduate.

*All DPD courses require a C or better.

Appendix B

Reservation Forms for RTL 242, FN 310, and CS 432

RESERVATION FORM
RTL 242 Textiles and Clothing Construction
DEPARTMENT OF FAMILY AND CONSUMER SCIENCES

Name_____ID#_____Date_____

Graduation Date: Spring_____ Fall_____

FCS Major_____Student Teaching_____

Semester Requested: Fall_____ (first choice)

Fall_____ (second choice)

Faculty Advisor Signature

Student Signature

DATE_____

Date_____

RTL 242 Instructor Signature

Date Received_____

RESERVATION FORM
FN 310 Principles of Food Preparation, Management, and Service
DEPARTMENT OF FAMILY AND CONSUMER SCIENCES

Name _____ ID # _____ Date _____

Graduation Date: Spring _____ Fall _____

FCS Major _____ Student Teaching _____

Semester Requested: Fall _____ (first choice)

 Fall _____ (second choice)

 Spring _____ (first choice)

 Spring _____ (second choice)

Faculty Advisor Signature

Student Signature

Date _____

Date _____

FN 310 Instructor Signature

Date Received _____

RESERVATION FORM
CS 432: COOPERATIVE MANAGEMENT
 DEPARTMENT OF FAMILY AND CONSUMER SCIENCES

Name: _____ Date: _____

Graduation Date: Spring _____ Fall _____ Summer _____

Student Number: _____

FCS Major _____

Semester Completing Internship: _____

Semester Completing Student Teaching: _____

Pre-Requisites Completed: CS 135 _____ FN 214 _____ FN 310 _____

Semester Hours Completed to date: _____

Overall GPA: _____ CNC Box Number: _____ CNC Phone: _____

Semester Requested:

First Choice Fall: _____ Spring: _____

Second Choice Fall: _____ Spring: _____

 Faculty Advisor Signature

 Student Signature

Date: _____

Date: _____

 Director, Cooperative Management Lab

Date Received by Director of CM Lab _____